

MT. CLEMENS, MICHIGAN

TACAN RWY 19

TACAN MTC Chan 64	APCH CRS 177°	Rwy Ldg THRE Arprt Elev 9000 579 580
-----------------------------	-------------------------	--

AL-276 [USAF]

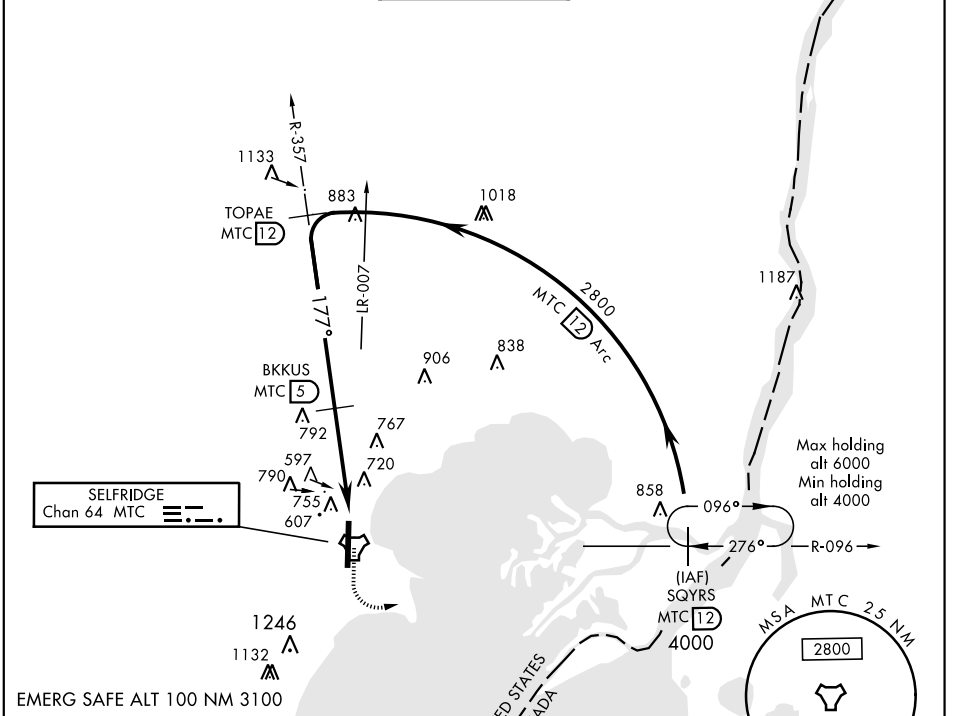
SELFRIDGE ANGB (KMTC)

▼ * When ALS inop, increase CAT AB RVR to 55, vis to 1 mile, CAT CDE vis to 1½ miles.
 ** Circling not authorized W of Rwy 1-19.

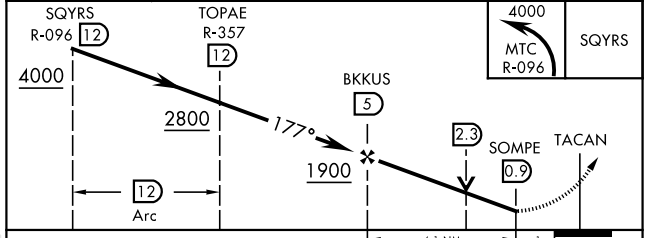
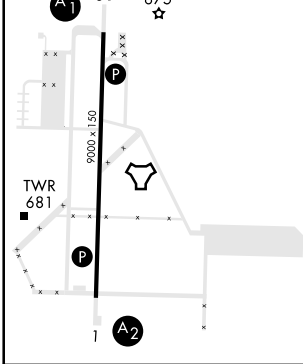


MISSED APPROACH: Climbing left turn to 4000, intercept MTC R-096 to SQYRS and hold, continue climb-in-hold to 4000.

ATIS 125.325 270.1	SELFRIDGE APP CON 119.6 318.2	SELFRIDGE TOWER * 120.15 (CTAF) 225.4	GND CON 128.3 275.8	CLNC DEL 128.3 275.8
------------------------------	---	---	-------------------------------	--------------------------------



ELEV 580	THRE 579
177° to TACAN	HIRL Rwy 1-19
	REIL Rwy 1-19



CATEGORY	A	B	C	D	E
S-19 *	1100/40 521 (600-¾)		1100/55 521 (600-1)		
CIRCLING **	1120-1 541 (600-1)		1120-1½ 541 (600-1½)	1140-2 561 (600-2)	

MT. CLEMENS, MICHIGAN
Amdt 3 23AUG12

42°36'N-82°50'W

SELFRIDGE ANGB (KMTC)

TACAN RWY 19

EC-1, 09 SEP 2021 to 07 OCT 2021

EC-1, 09 SEP 2021 to 07 OCT 2021