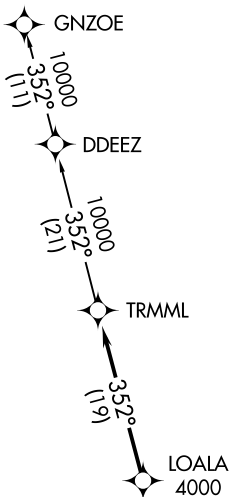


**TOP ALTITUDE:  
ASSIGNED BY ATC**



ATIS  
 125.325 270.1  
 CLNC DEL  
 128.3 275.8  
 GND CON  
 128.3 275.8  
 SELFRIDGE TOWER \*  
 120.15 225.4  
 SELFRIDGE DEP CON  
 119.6 391.9

TAKEOFF MINIMUMS:

Rwy 1: Standard.

Rwy 19: Standard with minimum climb of 234' per NM to 1500.

- NOTE: RNAV 1.
- NOTE: RADAR required.
- NOTE: DME/DME/IRU or GPS required.
- NOTE: Turbojet departures at/above 10000, maintain 280K until advised by ATC.



NOTE: Chart not to scale.



DEPARTURE ROUTE DESCRIPTION

TAKEOFF RUNWAY 1: Climb on heading 007° or as assigned for RADAR vectors to cross LOALA at or above 4000, thence....

TAKEOFF RUNWAY 19: Climb on heading 187° or as assigned for RADAR vectors to cross LOALA at or above 4000, thence....

....on track 352° to TRMML, then on (transition). Maintain ATC assigned altitude, expect filed altitude 10 minutes after departure.

GNZOE TRANSITION (TRMML3.GNZOE):