

(ZETTR3.ZETTR) 19339

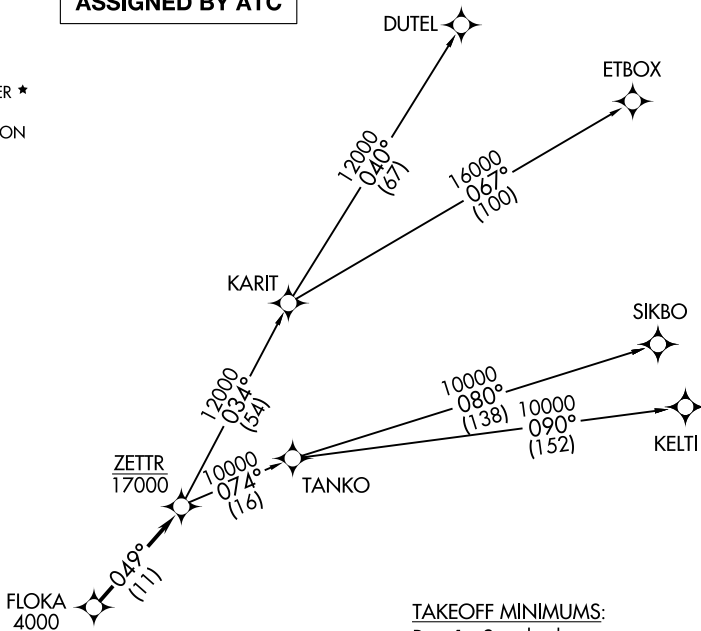
ZETTR THREE DEPARTURE (RNAV)

AL-276 (FAA)

SELFRIDGE ANGB (MTC)
MOUNT CLEMENS, MICHIGAN

ATIS
125.325 270.1
CLNC DEL
128.3 275.8
GND CON
128.3 275.8
SELFRIDGE TOWER ★
120.15 225.4
SELFRIDGE DEP CON
119.6 391.9

**TOP ALTITUDE:
ASSIGNED BY ATC**



TAKEOFF MINIMUMS:

Rwy 1: Standard.

Rwy 19: Standard with minimum climb of 234' per NM to 1500.

DEPARTURE ROUTE DESCRIPTION

TAKEOFF RUNWAY 1: Climb on heading 007° or as assigned for RADAR vectors to cross FLOKA at or above 4000, thence....

TAKEOFF RUNWAY 19: Climb on heading 187° or as assigned for RADAR vectors to cross FLOKA at or above 4000, thence....

...on track 049° to cross ZETTR at or below 17000, then on (transition). Maintain ATC assigned altitude, expect filed altitude 10 minutes after departure.

DUTEL TRANSITION (ZETTR3.DUTEL):

ETBOX TRANSITION (ZETTR3.ETBOX):

KELTI TRANSITION (ZETTR3.KELTI):

SIKBO TRANSITION (ZETTR3.SIKBO):

TANKO TRANSITION (ZETTR3.TANKO):

- NOTE: RNAV 1.
- NOTE: RADAR required.
- NOTE: DME/DME/IRU or GPS required.
- NOTE: Turbojet departures at/above 10000, maintain 280K until advised by ATC.
- NOTE: TANKO TRANSITION: For use by CYYZ area arrivals only, or as assigned by ATC.

NOTE: Chart not to scale.

ZETTR THREE DEPARTURE (RNAV)
(ZETTR3.ZETTR) 05DEC19

MOUNT CLEMENS, MICHIGAN
SELFRIDGE ANGB (MTC)

EC-1, 09 SEP 2021 to 07 OCT 2021

EC-1, 09 SEP 2021 to 07 OCT 2021