

WAAS CH <b>69410</b> <b>W14A</b>	APP CRS <b>141°</b>	Rwy Idg TDZE Apt Elev	<b>6100</b> <b>627</b> <b>629</b>
--	------------------------	-----------------------------	---

# RNAV (GPS) RWY 14

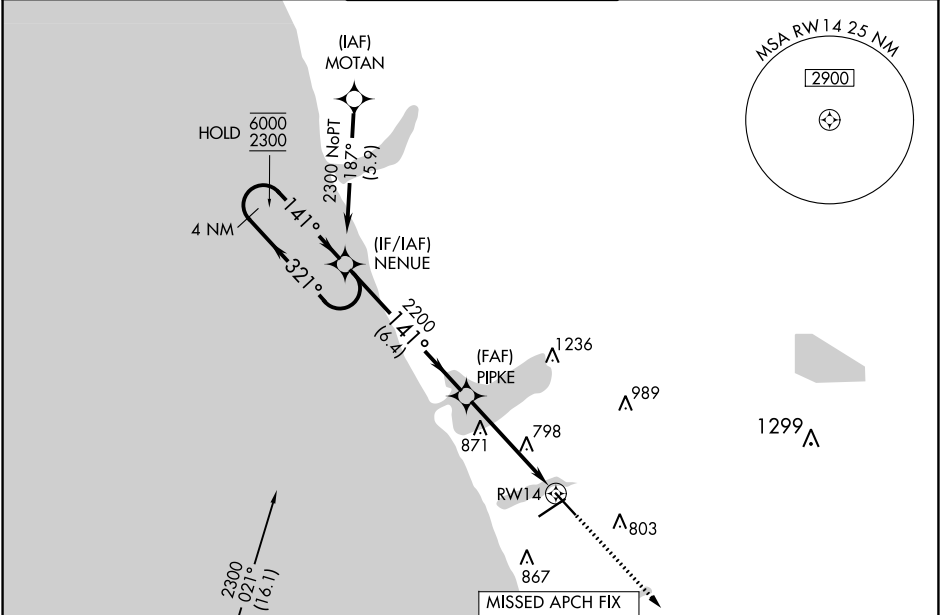
MUSKEGON COUNTY (MKG)

RNP APCH.

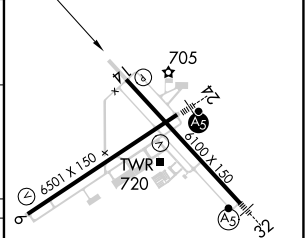
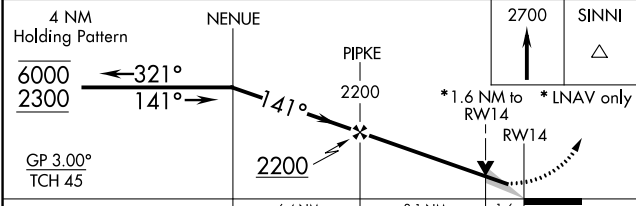
**⚠** For uncompensated Baro-VNAV systems, LNAV/VNAV NA below -18°C or above 54°C.  
**ASR**

**MISSED APPROACH:**  
Climb to 2700 direct SINNER and hold.

ATIS <b>124.3</b>	GREAT LAKES APP CON * <b>119.8 290.35</b> (North) <b>133.825 290.35</b> (South)	MUSKEGON TOWER * <b>126.25</b> (CTAF) <b>0 343.725</b>	GND CON <b>121.6</b>	UNICOM <b>122.95</b>
----------------------	---	---	-------------------------	-------------------------



MISSED APCH FIX SINNER 142° 4 NM 322°	ELEV <b>629</b> <b>D</b> TDZE <b>627</b>
--	--



CATEGORY	A	B	C	D
LPV DA		877- <sup>3</sup> / <sub>4</sub>	250 (300- <sup>3</sup> / <sub>4</sub> )	
LNAV/VNAV DA		1079-1 <sup>1</sup> / <sub>2</sub>	452 (500-1 <sup>1</sup> / <sub>2</sub> )	
LNAV MDA	1180-1	553 (600-1)	1180-1 <sup>1</sup> / <sub>2</sub> 553 (600-1 <sup>1</sup> / <sub>2</sub> )	1180-1 <sup>3</sup> / <sub>4</sub> 553 (600-1 <sup>3</sup> / <sub>4</sub> )
<b>C</b> CIRCLING	1180-1	551 (600-1)	1200-1 <sup>1</sup> / <sub>2</sub> 571 (600-1 <sup>1</sup> / <sub>2</sub> )	1200-2 571 (600-2)

REIL Rwy 6 **0**  
REIL Rwy 14  
HIRL Rwys 6-24 **0**  
HIRL Rwys 14-32

EC-1, 09 SEP 2021 to 07 OCT 2021

EC-1, 09 SEP 2021 to 07 OCT 2021