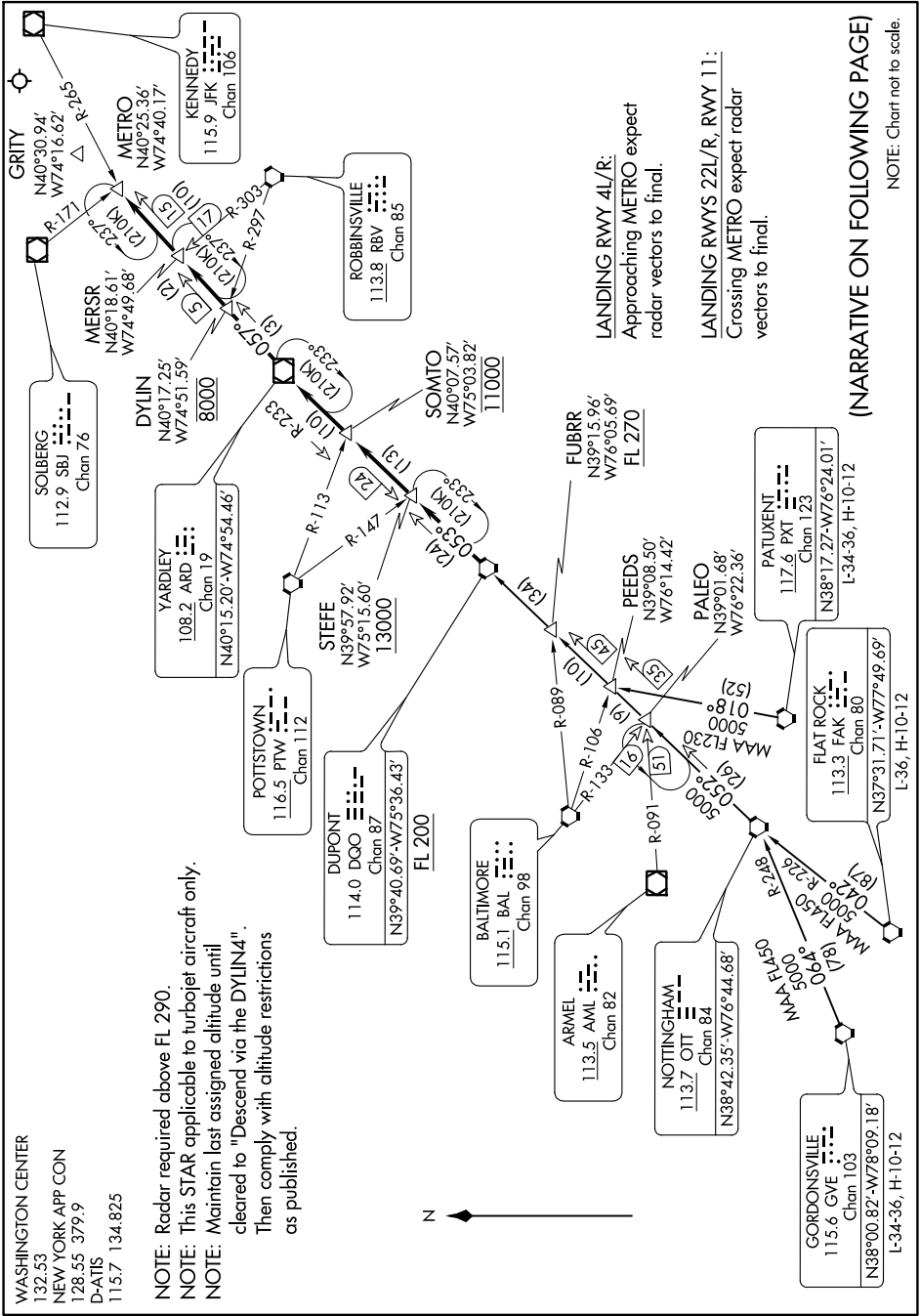


DYLIN FOUR ARRIVAL

NE-2, 09 SEP 2021 to 07 OCT 2021



WASHINGTON CENTER
132.53
NEW YORK APP CON
128.55 379.9
D-ATIS
115.7 134.825

NOTE: Radar required above FL 290.
NOTE: This STAR applicable to turbojet aircraft only.
NOTE: Maintain last assigned altitude until cleared to "Descend via the DYLIN4".
Then comply with altitude restrictions as published.

LANDING RWY 4L/R:
Approaching METRO expect radar vectors to find.

LANDING RWYS 22L/R, RWY 11:
Crossing METRO expect radar vectors to find.

(NARRATIVE ON FOLLOWING PAGE)

NOTE: Chart not to scale.

DYLIN FOUR ARRIVAL

NE-2, 09 SEP 2021 to 07 OCT 2021