

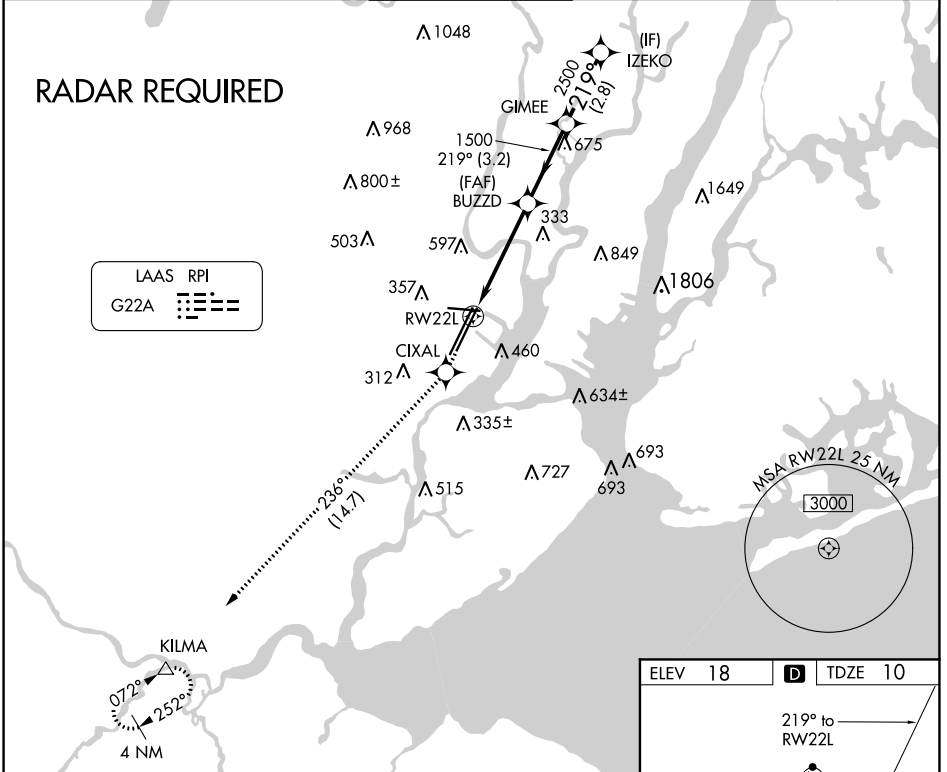
LAAS CH <b>21494</b> <b>G22A</b>	APP CRS <b>219°</b>	Rwy Idg TDZE <b>10</b> Apt Elev <b>18</b>
--	------------------------	---

# GLS RWY 22L

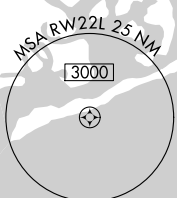
NEWARK LIBERTY INTL (EWR)

NA GPS Required. For inoperative MALS increase GLS all Cats visibility to RVR 4000. DME/DME RNP-0.3 NA. Autopilot coupled approach NA below 210.	ALSIF-2	MISSED APPROACH: Climb to 3000 direct CIXAL and on track 236° to KILMA and hold.

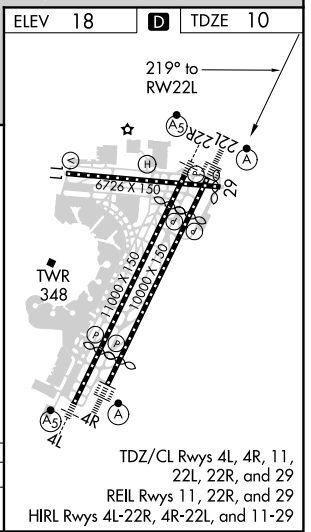
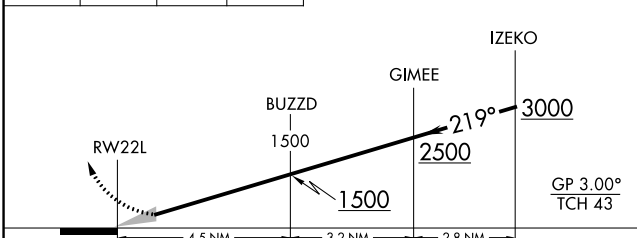
D-ATIS <b>115.7 134.825</b>	NEW YORK APP CON <b>128.55 379.9</b>	NEWARK TOWER <b>118.3 257.6</b>	GND CON <b>121.8</b>	CLNC DEL <b>118.85</b>	CPDLC
--------------------------------	---	------------------------------------	-------------------------	---------------------------	-------



LAAS RPI	G22A	
----------	------	--



3000	CIXAL	KILMA	VGSI and GLS glidepath not coincident (VGSI Angle 3.00/TCH 60).
		tr 236°	



CATEGORY	A	B	C	D
GLS DA	210/18 200 (200-1/2)			

# GLS RWY 22L

NE-2, 09 SEP 2021 to 07 OCT 2021

NE-2, 09 SEP 2021 to 07 OCT 2021