

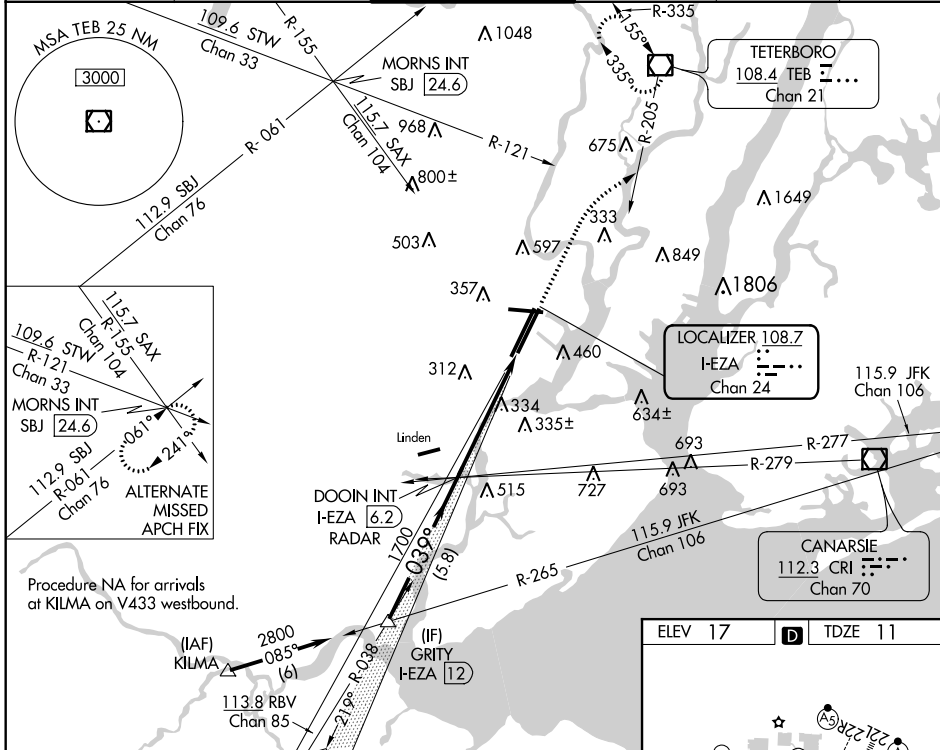
LOC/DME I-EZA 108.7 Chan 24	APP CRS 039°	Rwy Idg TDZE Apt Elev	8810 11 17
---	------------------------	-----------------------------	---------------------------------------

ILS RWY 4R (CAT II & III)

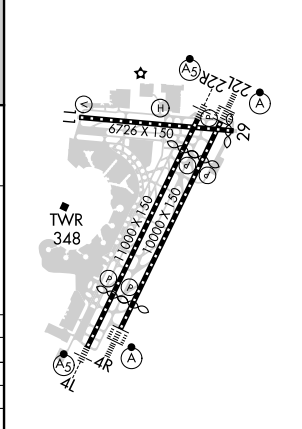
NEWARK LIBERTY INTL (EWR)

	MISSED APPROACH: Climb to 600 then climbing right turn to 2500 on heading 060° and TEB VOR/DME R-205 to TEB VOR/DME and hold.

D-ATIS 115.7 134.825	NEW YORK APP CON 128.55 379.9	NEWARK TOWER 118.3 257.6	GND CON 121.8	CLNC DEL 118.85	CPDLC
--------------------------------	---	------------------------------------	-------------------------	---------------------------	-------



ELEV 17	D	TDZE 11
---------	----------	---------



VGSI and ILS glidepath not coincident (VGSI Angle 2.95/TCH 71).

GRITY I-EZA 12	DOOIN INT I-EZA 6.2 RADAR	TEB R-205	TEB	
2800	1700			
GS 2.95° TCH 55				
CATEGORY	A	B	C	D
S-ILS 4R	CAT II RA 100/12 100 DA 111			
S-ILS 4R	CAT IIIa RVR 07			
S-ILS 4R	CAT IIIb RVR 06			
S-ILS 4R	CAT IIIc NA			

CATEGORY II & III ILS - SPECIAL AIRCREW & AIRCRAFT CERTIFICATION REQUIRED

TDZ/CL Rwys 4L, 4R, 11, 22L, 22R, and 29

REIL Rwys 11, 22R, and 29

HIRL Rwys 4L-22R, 4R-22L, and 11-29

NE-2, 09 SEP 2021 to 07 OCT 2021

NE-2, 09 SEP 2021 to 07 OCT 2021