

ILS or LOC RWY 4R

NEWARK LIBERTY INTL (EWR)

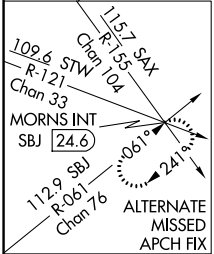
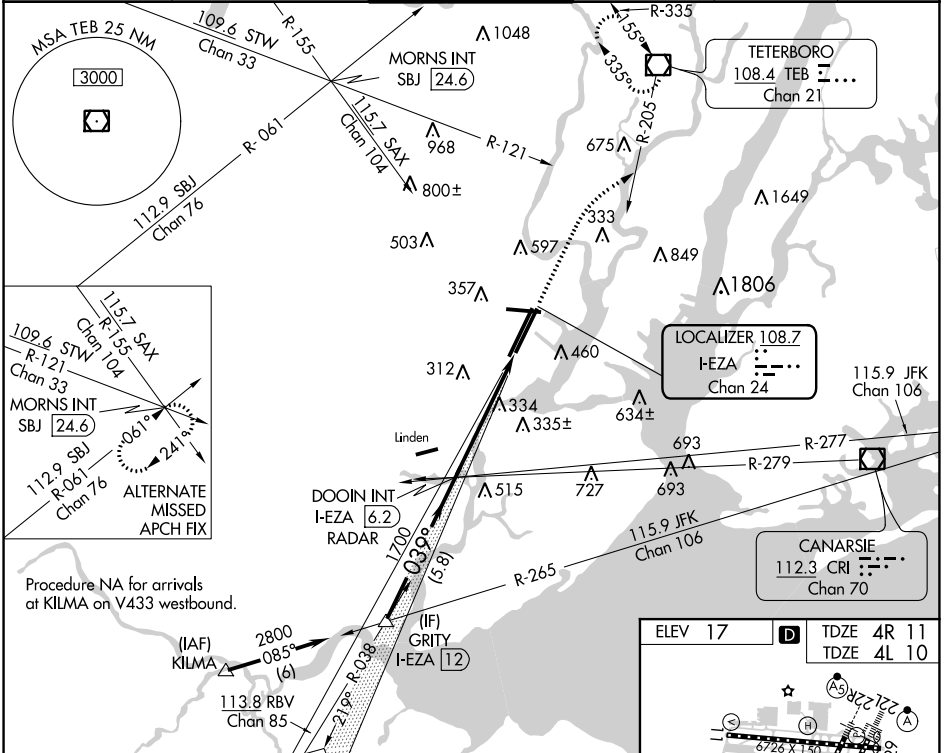
LOC/DME I-EZA	APP CRS	Rwy Idg	4R 8810	4L 8460
108.7	039°	TDZE	11	10
Chan 24		Apt Elev	17	17

▼ Inoperative table does not apply to sidestep 4L Cats A and B.
▲ For inoperative MALSRS, increase sidestep 4L Cat C visibility to 1 3/4 mile. When Circling to Rwy 29 at night, operational VGSI required, remain on or above VGSI glidepath until threshold.

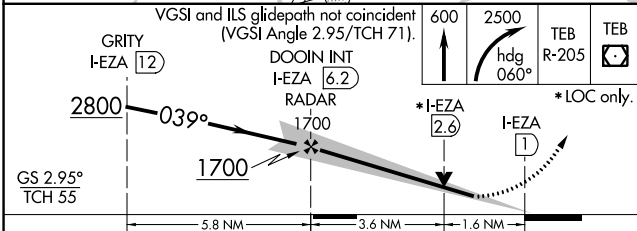


MISSED APPROACH: Climb to 600 then climbing right turn to 2500 on heading 060° and TEB VOR/DME R-205 to TEB VOR/DME and hold.

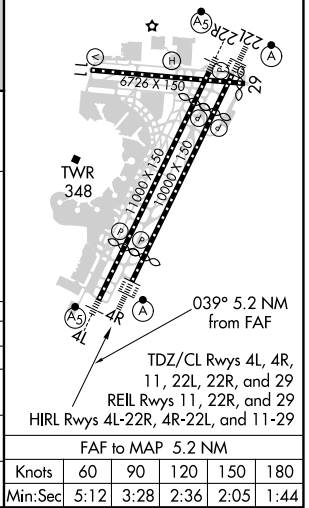
D-ATIS	NEW YORK APP CON	NEWARK TOWER	GND CON	CLNC DEL	CPDLC
115.7 134.825	128.55 379.9	118.3 257.6	121.8	118.85	



Procedure NA for arrivals at KILMA on V433 westbound.



ELEV 17	D	TDZE 4R 11
		TDZE 4L 10



CATEGORY	A	B	C	D
S-ILS 4R	211/18 200 (200-1/2)			
S-LOC 4R	600/24	589 (600-1/2)	600/60	589 (600-1 1/4)
SIDESTEP RWY 4L	620/50	610 (700-1)	620-1 3/8 610 (700-1 3/8)	620-1 1/2 610 (700-1 1/2)
C CIRCLING	760-1 743 (800-1)	820-1 803 (900-1)	900-2 3/4 883 (900-2 3/4)	900-3 883 (900-3)

*LOC only.					
TDZ/CL Rwsy 4L, 4R, 11, 22L, 22R, and 29					
REIL Rwsy 11, 22R, and 29					
HIRL Rwsy 4L-22R, 4R-22L, and 11-29					
FAF to MAP 5.2 NM					
Knots	60	90	120	150	180
Min:Sec	5:12	3:28	2:36	2:05	1:44

NE-2, 09 SEP 2021 to 07 OCT 2021

NE-2, 09 SEP 2021 to 07 OCT 2021