

# PENNS TWO ARRIVAL

NE-2, 09 SEP 2021 to 07 OCT 2021

NEW YORK APP CON  
127.6 379.9  
D-ATIS  
115.7 134.825

WILLIAMSPORT  
114.4 FQM  
Chan 91  
N41°20.31'-W76°46.49'  
L-30, H-10-12

WILKES-BARRE  
111.6 LVZ  
Chan 53  
N41°16.37'-W75°41.37'  
L-30-33-34, H-10-12

STILLWATER  
109.6 STW  
Chan 33

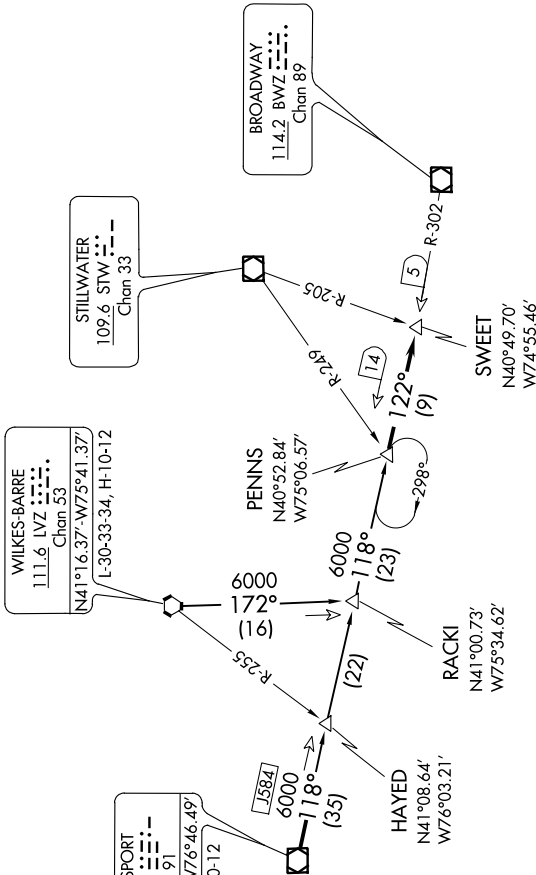
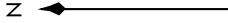
BROADWAY  
114.2 BWZ  
Chan 89

PENNS  
N40°52.84'  
W75°06.57'

RACKI  
N41°00.73'  
W75°34.62'

HAYED  
N41°08.64'  
W76°03.21'

SWEET  
N40°49.70'  
W74°55.46'



## ARRIVAL ROUTE DESCRIPTION

WILKES-BARRE TRANSITION (LVZ.PENNS2): From over LVZ VORTAC via R-172 to RACKI INT, then via FQM R-118 to PENNS INT. Thence . . . .

WILLIAMSPORT TRANSITION (FQM.PENNS2): From over FQM VOR/DME via FQM R-118 to PENNS INT. Thence . . . .

. . . . From over PENNS INT via BWZ VOR/DME R-302 to SWEET INT. Expect radar vectors to final approach course.

NOTE: This STAR is applicable to non-jet aircraft filed less than 250K landing Newark Liberty Intl airport.

NOTE: Chart not to scale.