

WAAS CH 77524 W22B	APP CRS 219°	Rwy Idg 9560 TDZE 10 Apt Elev 17
--	------------------------	---

RNAV (GPS) RWY 22R

NEWARK LIBERTY INTL (EWR)

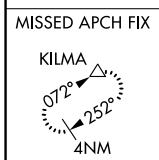
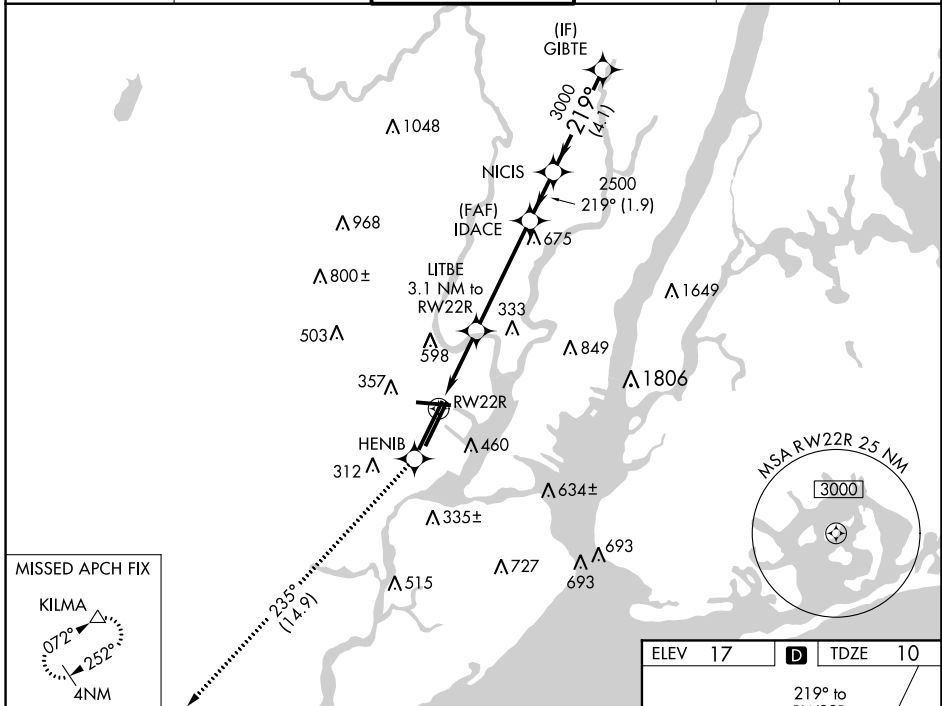
RNP APCH.

For inop ALS, increase LPV visibility to RVR 6000 all Cats. When Circling to Rwy 29 at night, operational VGSI required, remain on or above VGSI glidepath until threshold.

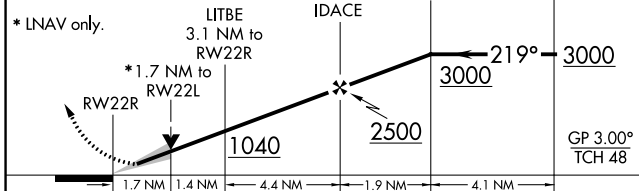


MISSED APPROACH: Climb to 3000 direct HENIB and on track 235° to KILMA and hold.

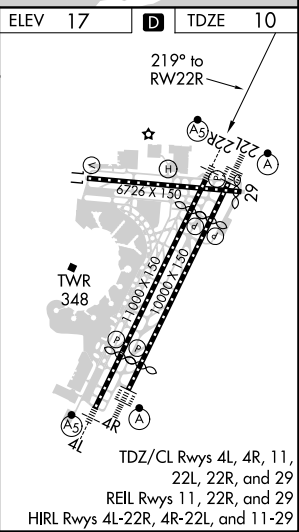
D-ATIS 115.7 134.825	NEW YORK APP CON 128.55 379.9	NEWARK TOWER 118.3 257.6	GND CON 121.8	CLNC DEL 118.85	CPDLC
--------------------------------	---	------------------------------------	-------------------------	---------------------------	-------



3000 HENIB tr 235° KILMA VGSI and RNAV glidepath not coincident (VGSI Angle 3.10/TCH 70).



CATEGORY	A	B	C	D
LPV DA		361/40	351 (400-¾)	
LNAV/VNAV DA		NA		
LNAV MDA	620/24	610 (700-½)	620/60 610 (700-1¼)	620-1½ 610 (700-1½)
CIRCLING	760-1¼ 743 (800-1¼)	820-1¼ 803 (800-1¼)	900-2¾ 883 (900-2¾)	900-3 883 (900-3)



RNAV (GPS) RWY 22R

NE-2, 09 SEP 2021 to 07 OCT 2021

NE-2, 09 SEP 2021 to 07 OCT 2021