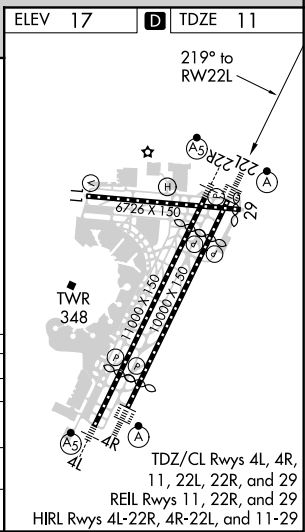
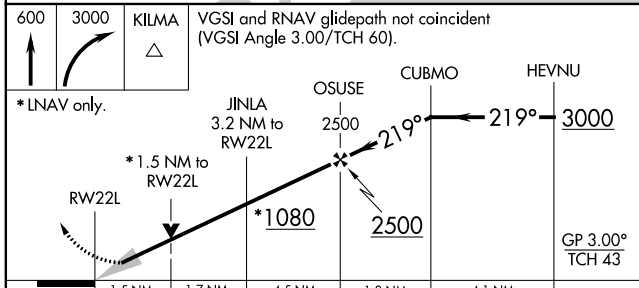
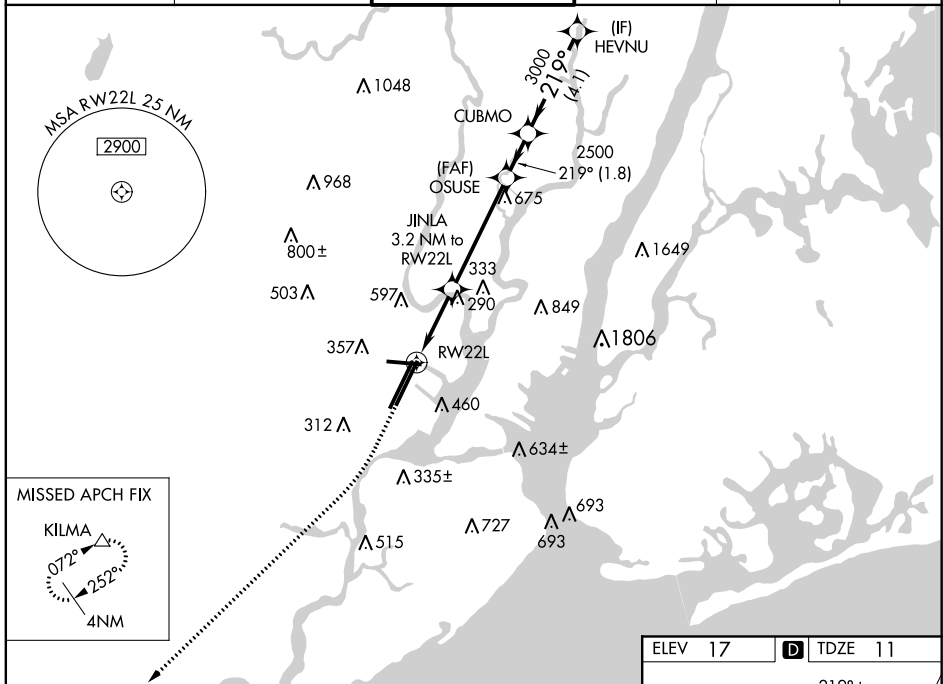


WAAS CH 70324 W22A	APP CRS 219°	Rwy Idg 8207 TDZE 11 Apt Elev 17
--	------------------------	---

RNAV (GPS) Z RWY 22L

NEWARK LIBERTY INTL (EWR)

RNP APCH.		NEWARK TOWER 118.3 257.6		GND CON 121.8	CLNC DEL 118.85	CPDLC
⚠ For uncompensated Baro-VNAV systems, LNAV/VNAV NA below -13°C or above 54°C. For inop ALS, increase LNAV/VNAV all Cats visibility to 1½ mile. When Circling to Rwy 29 at night, operational VGSI required, remain on or above VGSI glidepath until threshold. ⚠ MISSED APPROACH: Climb to 600 then climbing right turn to 3000 direct KILMA and hold.				ALSF-2 		



ELEV 17	TDZE 11		
600	3000	KILMA	VGSI and RNAV glidepath not coincident (VGSI Angle 3.00/TCH 60).
*LNAV only.			
RW22L	JINLA 3.2 NM to RW22L	OSUSE 2500	CUBMO HEVNU 3000
*1.5 NM to RW22L			
*1080			
GP 3.00° TCH 43			
1.5 NM	1.7 NM	4.5 NM	1.8 NM 4.1 NM
CATEGORY	A	B	C D
LPV DA		211/18	200 (200-½)
LNAV/VNAV DA		462/50	451 (500-1)
LNAV MDA	560/24	549 (600-½)	560/60 549 (600-1¼)
CIRCLING	760-1 743 (800-1)	820-1 803 (900-1)	900-2¾ 883 (900-2¾) 900-3 883 (900-3)

NE-2, 09 SEP 2021 to 07 OCT 2021

NE-2, 09 SEP 2021 to 07 OCT 2021