

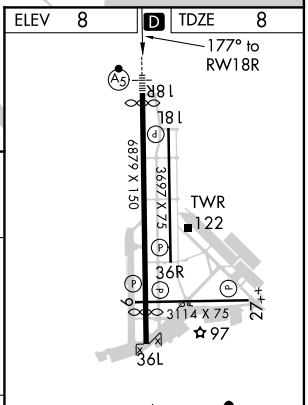
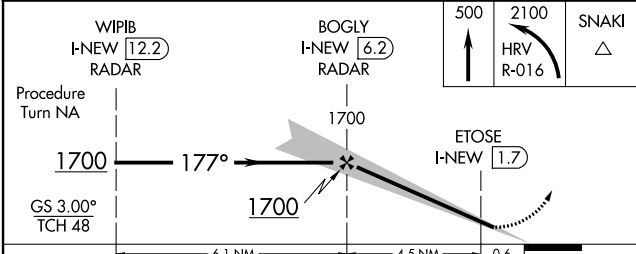
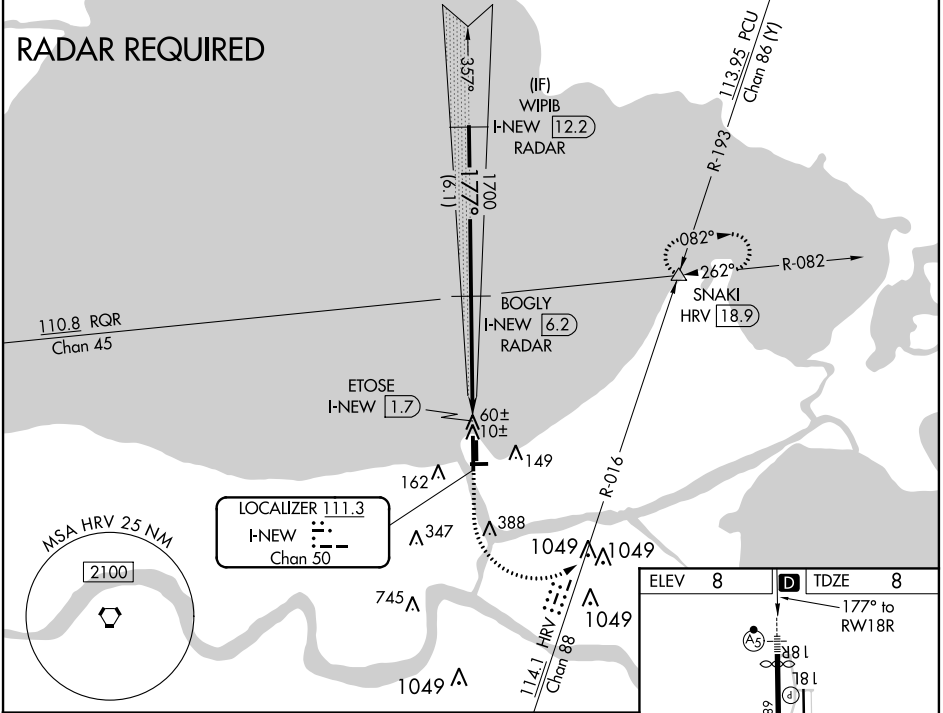
| | | |
|--|------------------------|---|
| LOC/DME I-NEW 111.3 Chan 50 | APP CRS 177° | Rwy Idg 5510 TDZE 8 Apt Elev 8 |
|--|------------------------|---|

ILS or LOC RWY 18R

LAKEFRONT (NEW)

| | | |
|--|--------------|---|
| <p>⚠ Inop table does not apply to S-ILS 18R. For inop MALSR when using Louis Armstrong New Orleans Intl altimeter setting, increase S-LOC 18R Cats A-C visibility to 1 mile. For inop MALSR, increase S-LOC 18R all Cats visibility to 1 mile. DME or RADAR required. Visibility reduction by helicopters NA. When local altimeter setting not received, use Louis Armstrong New Orleans Intl altimeter setting and increase all DA 29 feet and all MDA 40 feet; increase Circling Cat D visibility ¼ mile.</p> | <p>MALSR</p> | <p>MISSED APPROACH: Climb to 500 then climbing left turn to 2100 on HRV VORTAC R-016 to SNAKI INT and hold.</p> |
| | | |

| | | | | |
|----------------------|---|--|-------------------------|--------------------------|
| ATIS 124.9 | NEW ORLEANS APP CON NORTH 133.15 290.3 SOUTH 123.85 256.9 | LAKEFRONT TOWER * 119.9 (CTAF) | GND CON 121.7 | CLNC DEL 127.4 |
|----------------------|---|--|-------------------------|--------------------------|



| | | | | | | |
|-----------|----------------------|----------------------|----------------------|------------------------------|--|------|
| CATEGORY | A | B | C | D | | |
| S-ILS 18R | | 258-3/4 | 250 (300-3/4) | | | |
| S-LOC 18R | | 320-3/4 | 312 (400-3/4) | | | |
| CIRCLING | 480-1 472 (500-1) | 520-1 512 (600-1) | 700-2 692 (700-2) | 820-2 3/4 812 (900-2 3/4) | | |
| | | | | | MIRL Rwy 9-27 and 18R-36L MIRL Rwy 18L-36R REIL Rwy 9, 18L, 36L and 36R FAF to MAP 4.5 NM | |
| | Knots | 60 | 90 | 120 | 150 | 180 |
| | Min:Sec | 4:30 | 3:00 | 2:15 | 1:48 | 1:30 |

SC-4, 09 SEP 2021 to 07 OCT 2021

SC-4, 09 SEP 2021 to 07 OCT 2021