

WAAS CH <b>86913</b> <b>W36A</b>	APP CRS <b>357°</b>	Rwy Idg <b>5135</b> TDZE <b>8</b> Apt Elev <b>8</b>
----------------------------------------	------------------------	-----------------------------------------------------------

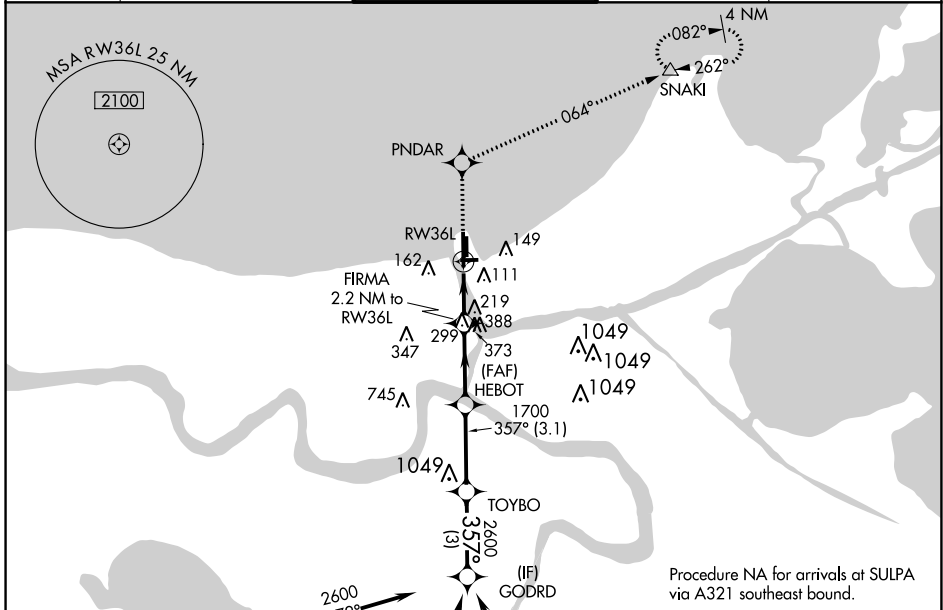
# RNAV (GPS) RWY 36L

LAKEFRONT (NEW)

▼ For uncompensated Baro-VNAV systems, LNAV/VNAV NA below -15°C (5°F) or above 49°C (120°F). DME/DME RNP-0.3 NA. When local altimeter setting not received, use Louis Armstrong New Orleans Intl altimeter setting: increase LPV DA to 369 feet, LNAV/VNAV DA to 460 feet and all visibilities ½ mile; increase all MDA 40 feet and Circling Cat D visibility ¼ mile. VDP and Baro-VNAV NA when using Louis Armstrong New Orleans Intl altimeter setting.

MISSED APPROACH: Climb to 2100 direct PNDAR and via track 064° to SNAKI and hold.

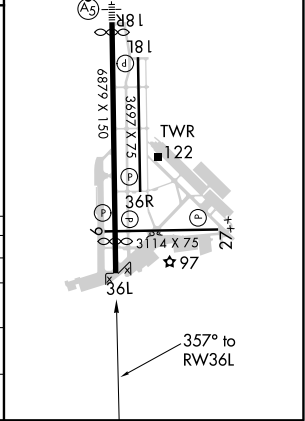
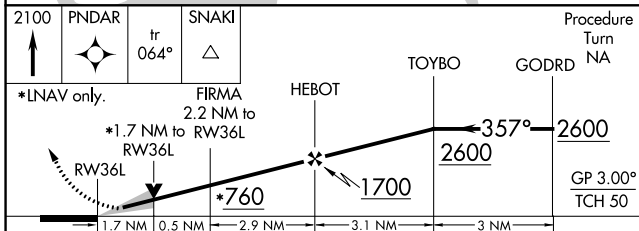
ATIS <b>124.9</b>	NEW ORLEANS APP CON NORTH <b>133.15 290.3</b> SOUTH <b>123.85 256.9</b>	LAKEFRONT TOWER * <b>119.9</b> (CTAF)	GND CON <b>121.7</b>	CLNC DEL <b>127.4</b>
----------------------	-------------------------------------------------------------------------------	------------------------------------------	-------------------------	--------------------------



Procedure NA for arrivals at SAFES via V198-552 westbound.

Procedure NA for arrivals at SULPA via A321 southeast bound.

ELEV <b>8</b>	<b>D</b> TDZE <b>8</b>
MIRL Rwy 9-27 and 18R-36L	
MIRL Rwy 18L-36R	
REIL Rwy 9, 18L, 36L and 36R	



CATEGORY	A	B	C	D
LPV DA		340-1 3/8	332 (400-1 1/8)	
LNAV/VNAV DA		431-1 3/8	423 (500-1 3/8)	
LNAV MDA	600-1	592 (600-1)	600-1 3/4	592 (600-1 3/4)
CIRCLING	600-1	592 (600-1)	700-2	820-2 3/4
			692 (700-2)	812 (900-2 3/4)

SC-4, 09 SEP 2021 to 07 OCT 2021

SC-4, 09 SEP 2021 to 07 OCT 2021