

# HI-TACAN RWY 10

TACAN Chan <b>86Y</b>	APCH CRS <b>097°</b>	Rwy ldg <b>8071'</b> TDZE <b>14'</b> Arprt Elev <b>15'</b>
--------------------------	-------------------------	--

JAL-290 [UN]

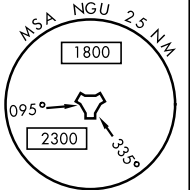
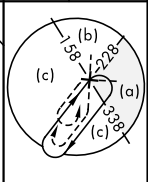
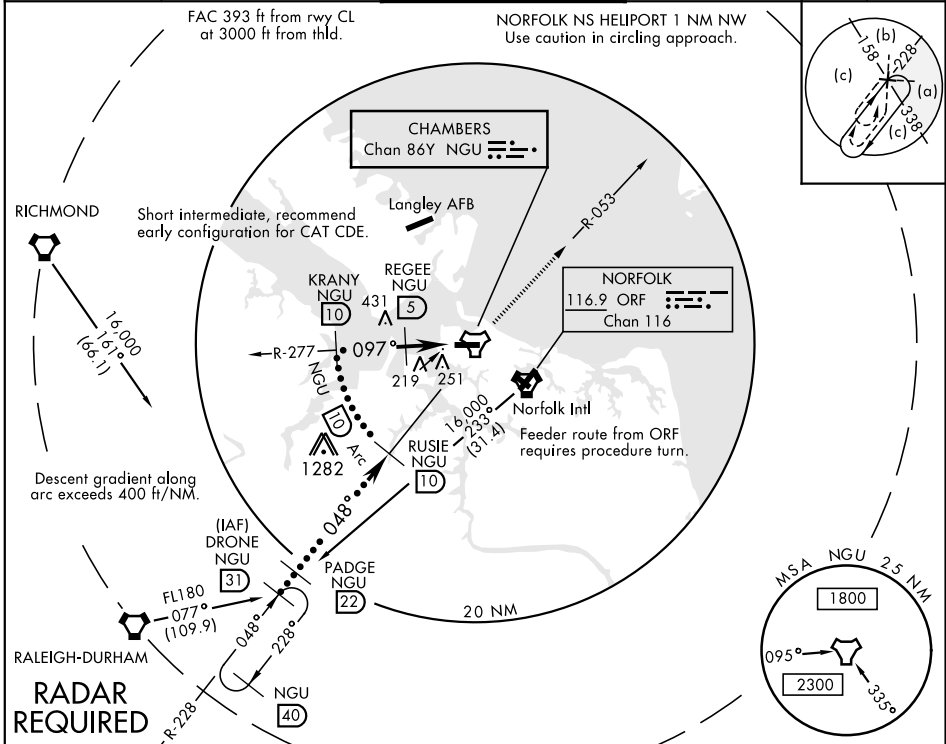
NORFOLK NS (CHAMBERS FIELD) (KNGU)

▼ \* When ALS inop, increase CAT CDE vis to 1 1/2 miles.  
 \*\* Circling not authorized S of Rwy 10-28.
 

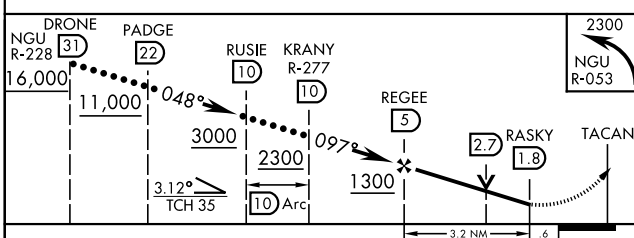
 ALSF-2  

 MISSED APPROACH: Climbing left turn to 2300 on NGU TACAN R-053 then as directed by ATC.

ATIS <b>118.425 342.0</b>	NORFOLK APP CON <b>118.9 353.7</b>	CHAMBERS TOWER <b>124.3 379.15</b>	GND CON <b>121.8 370.85</b>	ASR/PAR
------------------------------	---------------------------------------	---------------------------------------	--------------------------------	---------



EMERG SAFE ALT 100 NM 4100



ELEV 15	TDZE 14
Rwy 10 ldg 8071' Rwy 28 ldg 7375'	

HIRL Rwy 10-28  
 REIL Rwy 10-28  
 TDZL/CL Rwy 10-28

CATEGORY	C	D	E
S-10 *	520-1	506 (600-1)	
CIRCLING **	560-1 1/2 545 (600-1 1/2)	580-2 565 (600-2)	700-2 1/2 685 (700-2 1/2)

# HI-TACAN RWY 10

NE-3, 09 SEP 2021 to 07 OCT 2021

NE-3, 09 SEP 2021 to 07 OCT 2021