

# RNAV (GPS) RWY 10

APCH CRS <b>100°</b>	Rwy ldg 8071
	TDZE 14
	Arpt Elev 15

AL-290 [USN]

NORFOLK NS (CHAMBERS FIELD) (KNGU)

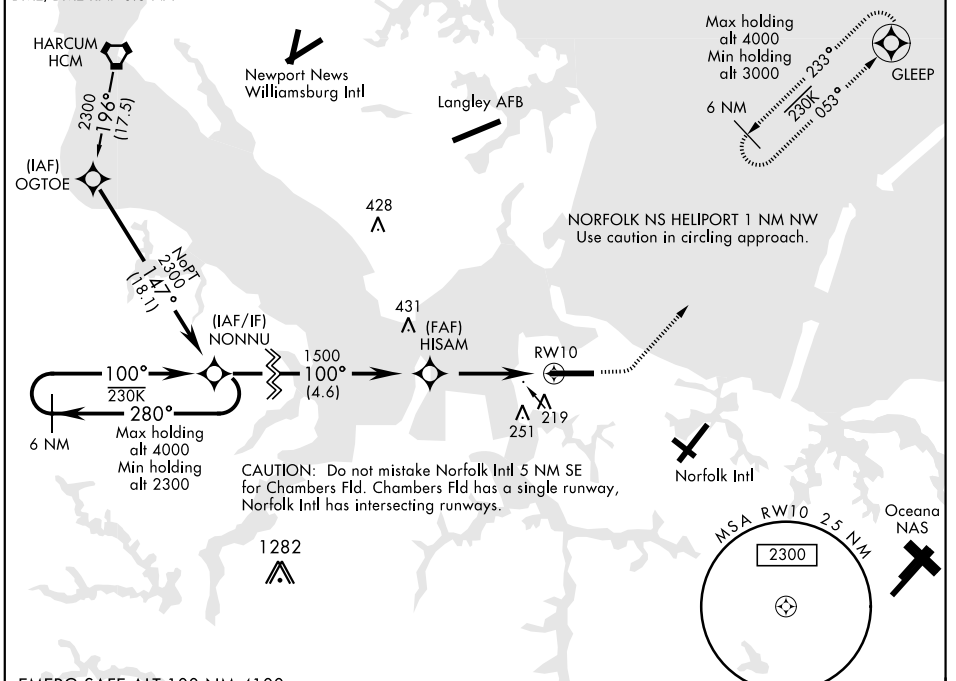
▼ \* When ALS inop, increase vis to 1½ miles.  
 \*\* When ALS inop, increase CAT AB vis to 1 mile, CAT CDE vis to 1½ miles.



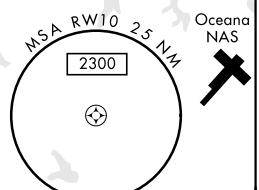
MISSED APPROACH: Climb to 800 then climbing left turn to 3000 direct GLEEP and hold.

ATIS <b>118.425 342.0</b>	NORFOLK APP CON <b>118.9 353.7</b>	CHAMBERS TOWER <b>124.3 379.15</b>	GND CON <b>121.8 370.85</b>	CLNC DEL <b>120.7 339.8</b>	ASR/PAR
------------------------------	---------------------------------------	---------------------------------------	--------------------------------	--------------------------------	---------

\*\*\* Circling not authorized S of Rwy 10-28. For uncompensated Baro-VNAV systems LNAV/VNAV NA below -15°C (5°F) and above 54°C (130°F).

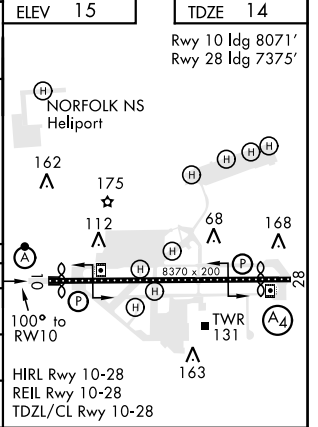


CAUTION: Do not mistake Norfolk Intl 5 NM SE for Chambers Fld. Chambers Fld has a single runway, Norfolk Intl has intersecting runways.



EMERG SAFE ALT 100 NM 4100

VGSi and RNAV GP not coincident with VGSi 3.00/TCH 35.					800 	3000 	GLEEP 	ELEV 15 TDZE 14
NONNU 2300 ← 280° 100° → 2300 GP 3.00° TCH 50					† LNAV only HISAM † 1.4 NM to RWY 10 RWY 10 4.5 NM			Rwy 10 ldg 8071' Rwy 28 ldg 7375'
CATEGORY	A	B	C	D	E			
LNAV/VNAV DA *	500-1		486	(500-1)				
LNAV MDA **	500-½ 486 (500-½)		500-1 486		(500-1)			
CIRCLING ***	500-1 485 (500-1)	560-1 545 (600-1)	560-1½ 545 (600-1½)	580-2 565 (600-2)	700-2½ 685 (700-2½)			



# RNAV (GPS) RWY 10

NE-3, 09 SEP 2021 to 07 OCT 2021

NE-3, 09 SEP 2021 to 07 OCT 2021