

TACAN RWY 10

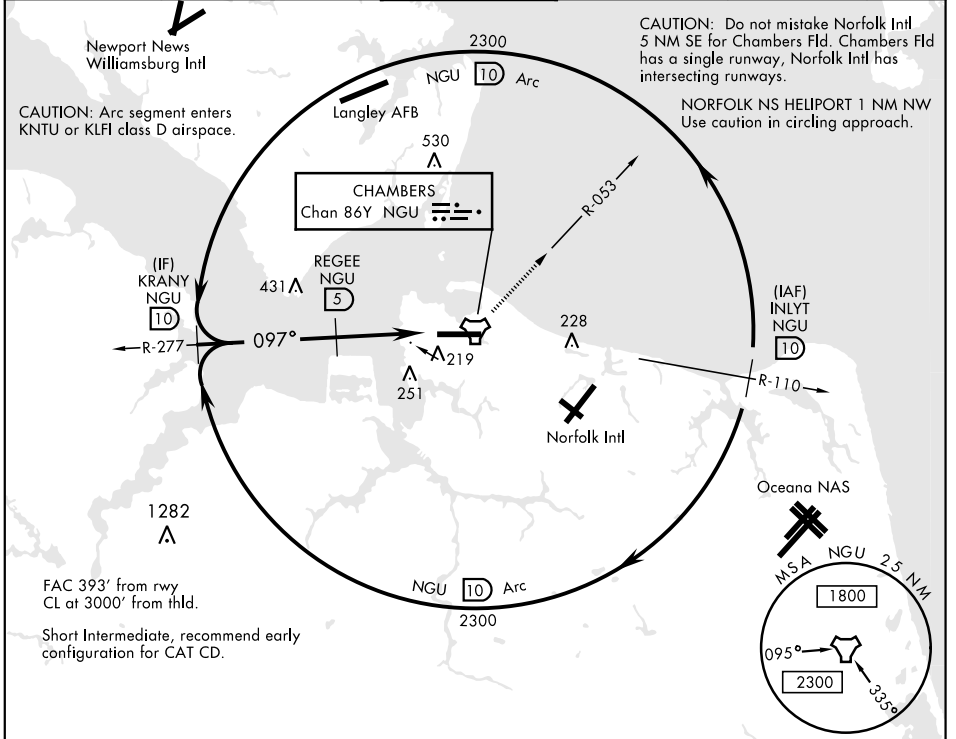
TACAN NGU Chan 86(Y)	APCH CRS 097°	Rwy Idg TDZE Arpt Elev	8071 14 15
--------------------------------	-------------------------	------------------------------	---------------------------------------

AL-290 [USN]

NORFOLK NS (CHAMBERS FIELD) (KNGU)

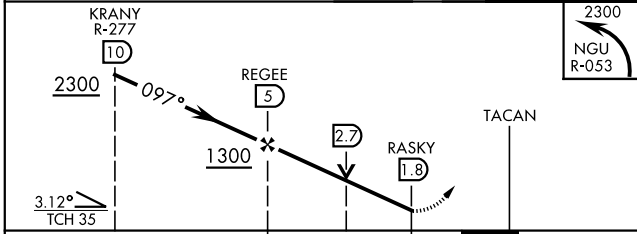
<p>▼ * When ALS inop, increase CAT AB vis to 1 mile, CAT CD vis to 1 3/8 miles. ** Circling not authorized S of Rwy 10-28.</p>	<p>ALSF-2</p>	<p>MISSED APPROACH: Climbing left turn to 2300 on NGU TACAN R-053 then as directed by ATC.</p>
--	---------------	--

<p>ATIS 118.425 342.0</p>	<p>NORFOLK APP CON 118.9 353.7</p>	<p>CHAMBERS TOWER 124.3 379.15</p>	<p>GND CON 121.8 370.85</p>	<p>CLNC DEL 120.7 339.8</p>	<p>ASR/PAR</p>
--------------------------------------	---	---	--	--	----------------

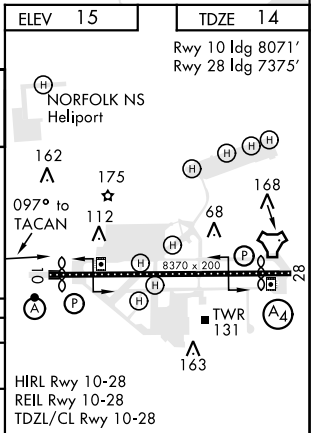


RADAR REQUIRED

EMERG SAFE ALT 100 NM 4100



CATEGORY	A	B	C	D
S-10*	520-1/2	506 (600-1/2)	520-1	506 (600-1)
CIRCLING**	520-1 505 (600-1)	560-1 545 (600-1)	560-1 1/2 545 (600-1 1/2)	580-2 565 (600-2)



TACAN RWY 10

NE-3, 09 SEP 2021 to 07 OCT 2021

NE-3, 09 SEP 2021 to 07 OCT 2021