

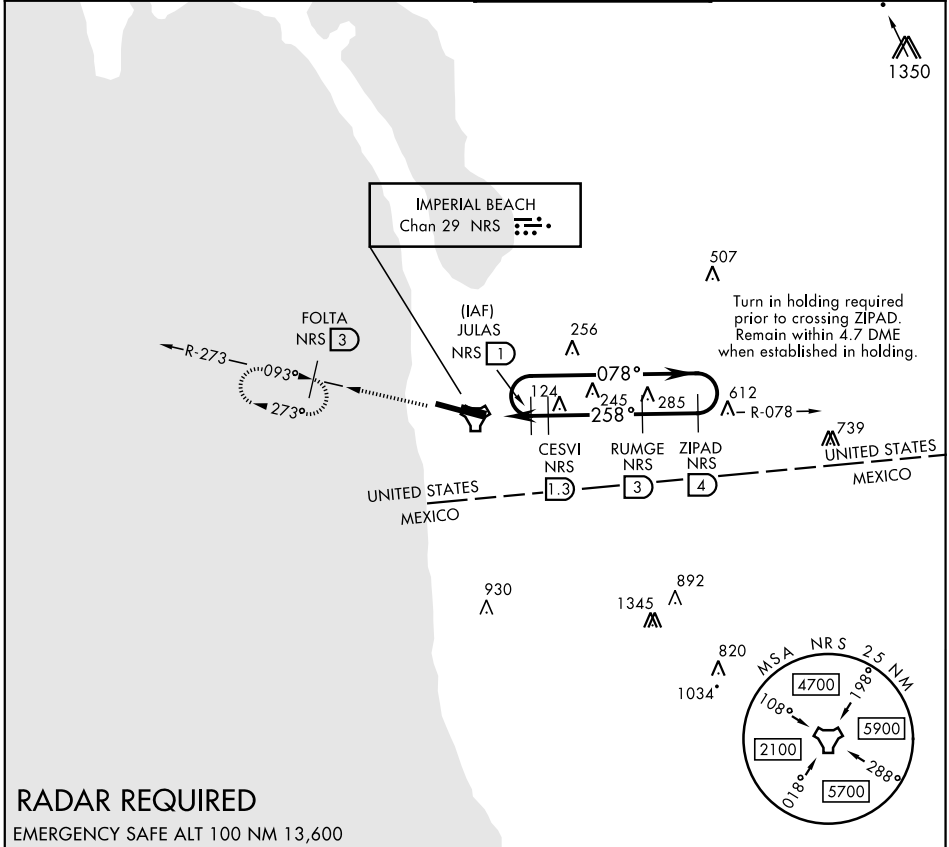
COPTER TACAN RWY 27

AL-307 [USN] IMPERIAL BEACH NOLF (REAM FIELD) (KNRS)

TACAN NRS Chan 29	APCH CRS 258°	Rwy Idg THRE Arprt Elev 4997 20 24
-----------------------------	-------------------------	------------------------------------------------------------------------

▼ Max airspeed 90 KIAS. MISSED APPROACH: Climb to 1600 via NRS TACAN R-078 to NRS, then via NRS R-273 to FOLTA, continue climb-in-hold to 1600. Remain within 5.2 DME when established in holding.

ATIS ★ /ASOS 276.2	SOCAL APP CON 125.15 317.55	IMPERIAL BEACH TOWER ★ 120.65 239.25	GND CON 285.575
------------------------------	---------------------------------------	------------------------------------------------	---------------------------



RADAR REQUIRED

EMERGENCY SAFE ALT 100 NM 13,600

<p>JULAS R-078 1 078° →</p> <p>1900</p> <p>← 258°</p> <p>ZIPAD R-078 4</p> <p>RUMGE 3</p> <p>1900</p> <p>1600</p> <p>258°</p> <p>CESVI 1.3</p> <p>740</p> <p>1600</p> <p>TACAN 5</p> <p>CISAV 5</p> <p>8 NM</p> <p>1.7 NM</p> <p>VDA CESVI to thld</p> <p>5.39°</p> <p>TCH 50</p>		<p>Remain within 4.7 DME</p> <p>1600</p> <p>NRS R-078</p> <p>NRS R-273</p>	<p>ELEV 24</p> <p>THRE 20</p>
<p>CATEGORY</p> <p>H-27</p>		<p>COPTER</p> <p>360-1 340 (400-1)</p>	

HIRL Rwy 9-27

SW-3, 09 SEP 2021 to 07 OCT 2021

SW-3, 09 SEP 2021 to 07 OCT 2021

COPTER TACAN RWY 27