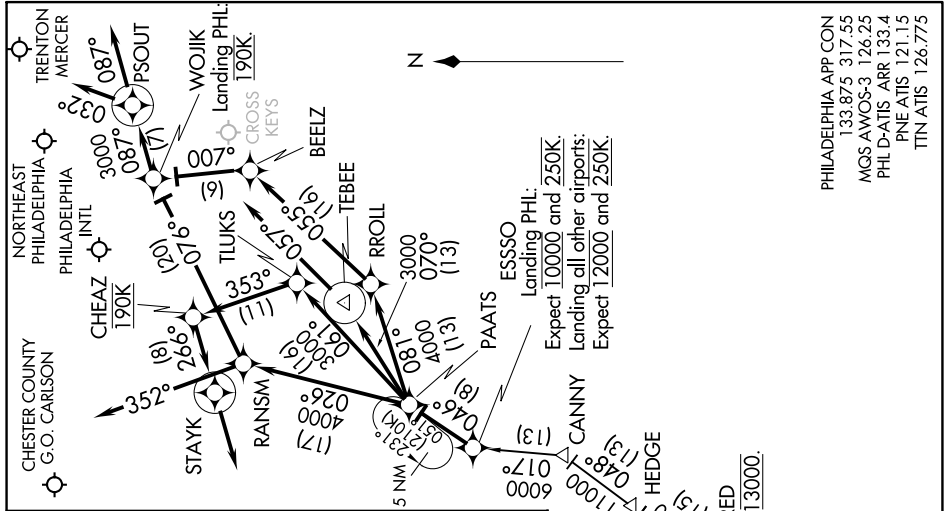


PAATS THREE ARRIVAL (RNAV)

PHILADELPHIA, PENNSYLVANIA

NE-4, 09 SEP 2021 to 07 OCT 2021



PHILADELPHIA APP CON
133.875 317.55
MQS AMWOS-3 126.25
PHL D-ATIS ARR 133.4
PNE ATIS 121.15
ITT ATIS 126.775

ARRIVAL ROUTE DESCRIPTION

FLAT ROCK TRANSITION (FAK.PAATS3):
GORDONSVILLE TRANSITION (GVE.PAATS3):
PATUXENT TRANSITION (PXT.PAATS3):

From over ESSO on track 046° to PAATS thence....

Landing MQS: From over PAATS on track 026° to RANSM, then on heading 352°. Expect RADAR vectors to final approach course.

Landing PNE, ITIN: From over PAATS on track 026° to RANSM, then on track 076° to WOJIK, then on track 087° to PSOUT, then on heading 032°. Expect RADAR vectors to final approach course.

Landing PHL Rwy 9L, 9R: From over PAATS on track 061° to TLUKS, then on track 353° to cross CHEAZ at 190K, then on track 266° to STAYK, then on track 266°. Expect RADAR vectors to final approach course.

Landing PHL Rwy 17, 35: From over PAATS on track 070° to TEBEE, then on heading 057°. Expect RADAR vectors to final approach course.

Landing PHL Rwy 26, 27L, 27R: From over PAATS on track 081° to RROLL, then on track 055° to BEELZ, then on track 007° to cross WOJIK at 190K, then on track 087° to PSOUT, then on track 087°. Expect RADAR vectors to final approach course.

NOTE: DME/DME/IRU or GPS required.
NOTE: RNAV 1.
NOTE: For turbojets only.
NOTE: PXT transition as assigned by ATC.
NOTE: RADAR required.
NOTE: CAUTION: Parachute Jumping 3.3 NM NE BEELZ, 1.5 NM radius Cross Keys Airport AOB 13,500 (SR-55).

JAYBO Expect 15000.
 14000 087° (35)
 10 NM
 BUKYK 056° (67)
 10 NM
 1700 070° (78)
 GORDONSVILLE GVE
 1700 048° (120)
 SHONA
 1500 048° (30)
 PATUXENT PXT
 Expect 13000.
 12000 1100 (13)
 HEDGE
 12000 115 (15)
 GARED Expect 13000.
 10 NM
 15000 048° (30)
 PATUXENT PXT

NOTE: Chart not to scale.

NE-4, 09 SEP 2021 to 07 OCT 2021

PAATS THREE ARRIVAL (RNAV)

PHILADELPHIA, PENNSYLVANIA