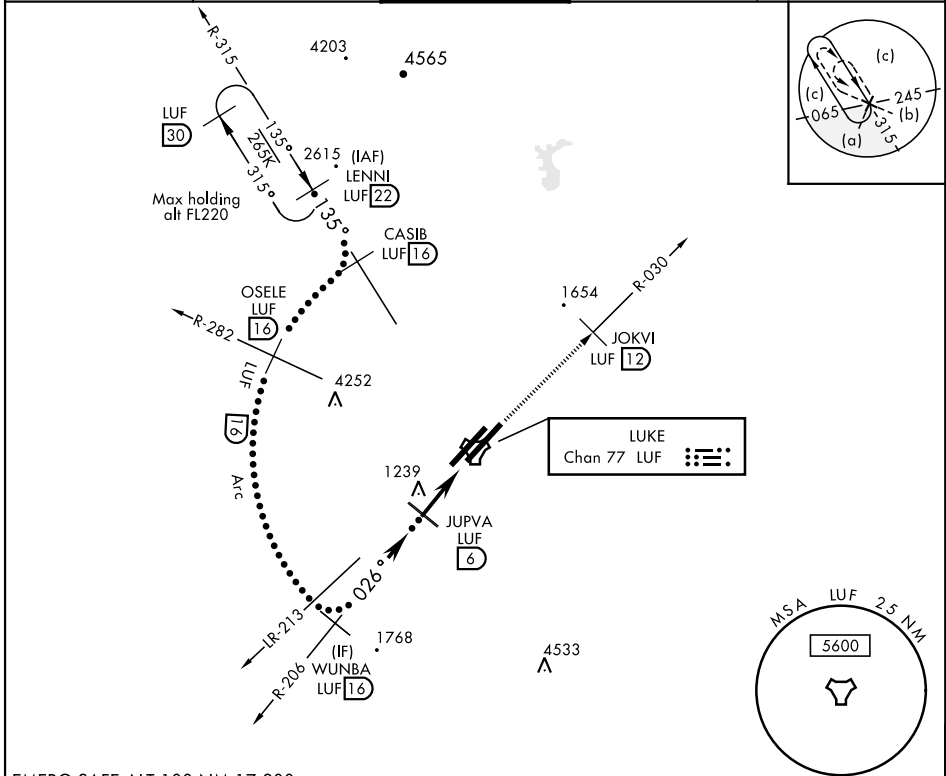


HI-TACAN RWY 3R

TACAN LUF Chan 77	APCH CRS 026°	Rwy ldg 9904 TDZE 1074 Arpt Elev 1085	JAL-321 [USAF]	LUKE AFB (KLUF)
* When ALS inop, increase vis to 1 1/4 miles.			ALSF-1 (A1)	MISSED APPROACH: Climbing to 4000, intercept LUF TACAN R-030 to 12 DME (JOKVI). Contact Luke APP CON.

ATIS * 134.925 269.9	LUKE APP CON 118.15 363.125	LUKE TOWER * 119.1 379.9	GND CON 133.175 335.8	CLNC DEL 126.25 273.475
--------------------------------	---------------------------------------	------------------------------------	---------------------------------	-----------------------------------



EMERG SAFE ALT 100 NM 17,200

LENNI R-315 (22)	CASIB R-315 (16)	OSELE R-282 (16)	WUNBA R-206 (16)	JUPVA R-206 (6)	JOKVI LUF (12)	ELEV 1085	TDZE 1074
12,000	7000	5000	2800	4000			
3.05° TCH 51	Arc	Arc	Arc	Arc			
CATEGORY	C	D	E				
S-3R *	1500/40	426	(500-3/4)				
CIRCLING	NOT AUTHORIZED						
						026° 5.2NM from FAF	HIRL all Rwy

HI-TACAN RWY 3R

SW-4, 09 SEP 2021 to 07 OCT 2021

SW-4, 09 SEP 2021 to 07 OCT 2021