

# LENNI THREE ARRIVAL

AL-321 (FAA)

LUKE AIR FORCE BASE (LUF)  
GLENDALE, ARIZONA

ALBUQUERQUE CENTER  
128.45 289.9  
LUKE RAPCON ★  
118.15 363.125  
LUKE TOWER ★  
119.1 379.9  
ATIS ★  
134.925 269.9  
METRO  
267.4

**DRAKE**  
114.1 DRK   
Chan 88  
N34°42.15'-W112°28.82'  
L-8, H-4

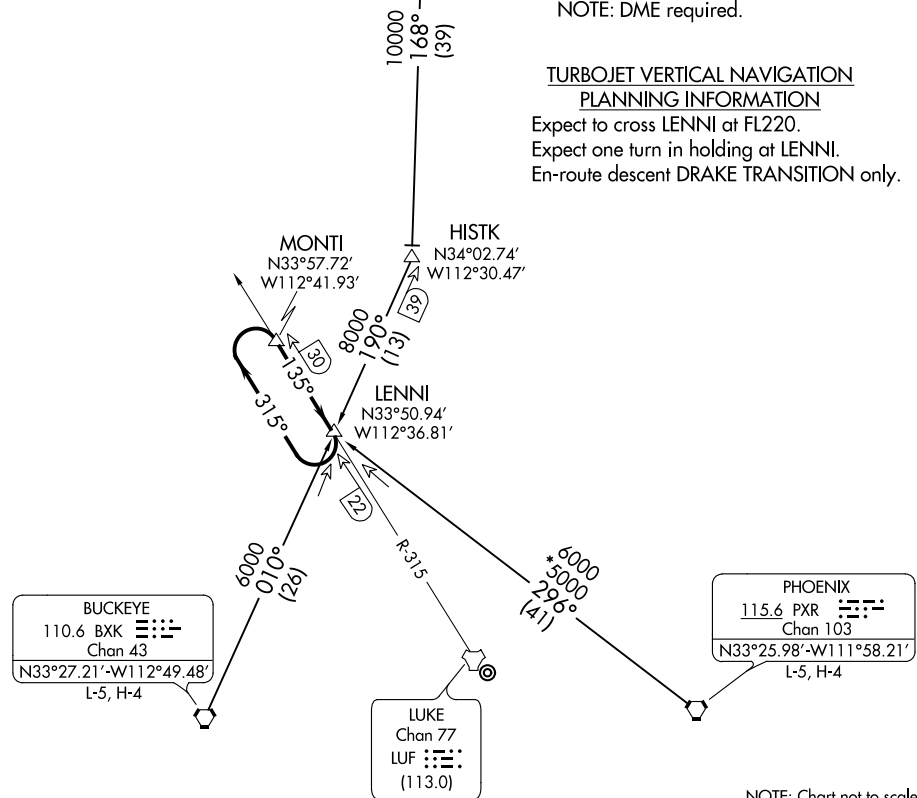
NOTE: Military Only.  
NOTE: DME required.

TURBOJET VERTICAL NAVIGATION  
PLANNING INFORMATION

Expect to cross LENNI at FL220.  
Expect one turn in holding at LENNI.  
En-route descent DRAKE TRANSITION only.

SW-4, 09 SEP 2021 to 07 OCT 2021

SW-4, 09 SEP 2021 to 07 OCT 2021



NOTE: Chart not to scale.

### ARRIVAL ROUTE DESCRIPTION

BUCKEYE TRANSITION (BXX.LENNI3): From over BXX VORTAC via BXX R-010 to LENNI INT. Thence . . . .

DRAKE TRANSITION (DRK.LENNI3): From over DRK VORTAC via DRK R-168 and BXX R-010 to LENNI INT. Thence . . . .

PHOENIX TRANSITION (PXR.LENNI3): From over PXR VORTAC via PXR R-296 to LENNI INT. Thence . . . .

. . . . expect one turn in holding at LENNI INT followed by HI-TACAN/HI-ILS or LOC/DME to Luke AFB.

# LENNI THREE ARRIVAL

(LENNI.LENNI3) 31AUG08

GLENDALE, ARIZONA  
LUKE AIR FORCE BASE (LUF)