

# BLYTHE FIVE ARRIVAL

AL-322 (FAA)

PHOENIX, ARIZONA

SW-4, 09 SEP 2021 to 07 OCT 2021

## ARRIVAL ROUTE DESCRIPTION

**BLYTHE TRANSITION (BLH.BLH5):** From over BLH VORTAC on BLH R-082 to SALOM, then on GBN R-285 and IWA R-256 to ARLIN. Thence . . . .

**PHOENIX SKY HARBOR INTL:** Rwy 7L/R or 8: From over ARLIN, expect vectors to final approach course; Rwy 25L/R or 26: From over ARLIN, on IWA R-256 to TUKEE. Expect vectors to final approach course prior to TUKEE.  
**SATELLITE AIRPORTS:** Expect vectors after passing SALOM.

**LOST COMMUNICATIONS:** After ARLIN, on IWA R-256 and PXR R-143 to PXR VORTAC.

**BLYTHE**  
117.4 BLH  
Chan 121  
N33°35.76' W114°45.68'  
L-4-5, H-4

**SALOM**  
N33°30.97' W113°53.33  
**VERTICAL NAVIGATION**  
**PLANNING INFORMATION**  
Turboprop expect 17000  
Turbojet landing KPHX expect vectors after SALOM.

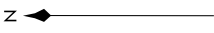
**BUCKEYE**  
110.6 BKK  
Chan 43

**PHOENIX**  
115.6 PXR  
Chan 103  
N33°25.98' W111°58.21'

**PHOENIX-SKY HARBOR INTL**  
N33°17.02' W112°41.11'

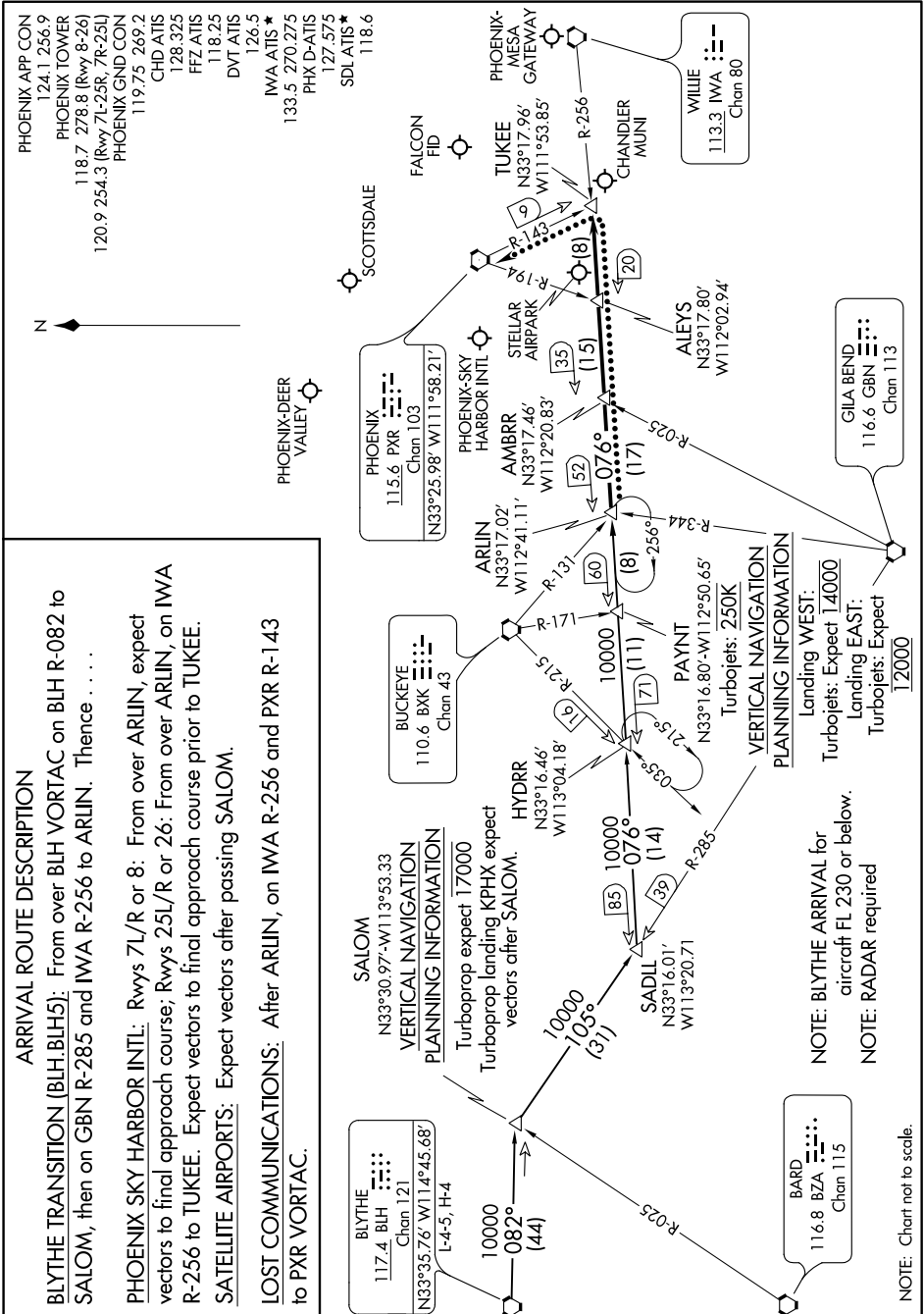
**PHOENIX-MESA GATEWAY**  
N33°17.96' W111°53.85'

**PHOENIX APP CON**  
124.1 256.9  
**PHOENIX TOWER**  
118.7 278.8 (Rwy 8-26)  
120.9 254.3 (Rwy 7L-25R, 7R-25L)  
**PHOENIX GND CON**  
119.75 269.2  
CHD ATIS 128.325  
FFZ ATIS 118.25  
DVT ATIS 126.5  
IWA ATIS 133.5 270.275  
PHX D-ATIS 127.575  
SDL ATIS 118.6



# BLYTHE FIVE ARRIVAL

PHOENIX, ARIZONA



NOTE: Chart not to scale.

SW-4, 09 SEP 2021 to 07 OCT 2021