


LOC/DME I-RJG 110.75 Chan 44 (Y)	APP CRS 258°	Rwy Idg TDZE Apt Elev	7800 1126 1135
---	------------------------	-----------------------------	---

ILS or LOC RWY 25L

PHOENIX SKY HARBOR INTL (PHX)

⚠ Autopilot coupled approach NA below 1925.
⚠ Simultaneous approach authorized with Rwy 26.

MALS  MISSED APPROACH: Climb to 3000 then climbing left turn to 5000 on heading 130° and PXR R-163 to POPKE/15 DME and hold.

D-ATIS 127.575	PHOENIX APP CON 128.65 353.9	PHOENIX TOWER 118.7 278.8 (Rwy 8-26) 120.9 254.3 (Rwy 7L-25R, 7R-25L)	GND CON 119.75 269.2 (N) 132.55 269.2 (S)	CLNC DEL 118.1 269.2	CPDLC
--------------------------	--	---	---	--------------------------------	-------

△ 2358

DME or RADAR REQUIRED

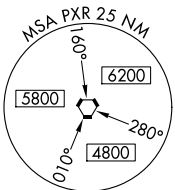
LOCALIZER 110.75
I-RJG
Chan 44 (Y)

PHOENIX 115.6 PXR
Chan 103

WILLIE 113.3 IWA
Chan 80

ALTERNATE MISSED APCH FIX

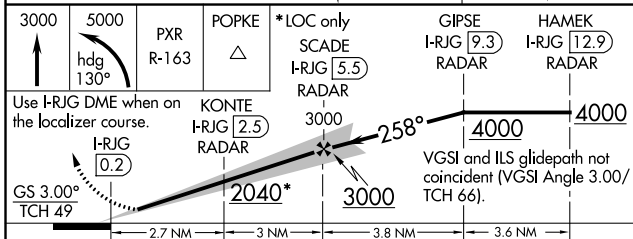
WILLIE IWA 113.3
Chan 80



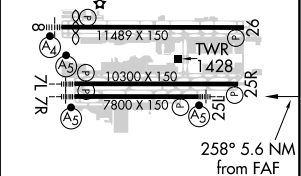
POPKE PXR 15

GIPSE I-RJG 9.3
RADAR

HAMEK I-RJG 12.9
RADAR



ELEV 1135	D	TDZE 1126
-----------	----------	-----------



CATEGORY	A	B	C	D
S-ILS 25L	1326-1/2 200 (200-1/2)			
S-LOC 25L	1520-1/2 394 (400-1/2)		1520-3/4 394 (400-3/4)	
C CIRCLING	1740-1 605 (700-1)	2040-2 3/4 905 (1000-2 3/4)	2560-3 1425 (1500-3)	

HIRL Rwy 8-26, 7L-25R and 7R-25L REIL Rwy 26					
FAF to MAP 5.6 NM					
Knots	60	90	120	150	180
Min:Sec	5:36	3:44	2:48	2:14	1:52

SW-4, 09 SEP 2021 to 07 OCT 2021

SW-4, 09 SEP 2021 to 07 OCT 2021