

LOC/DME I-SYQ 111.75 Chan 54 (Y)	APP CRS 078°	Rwy Idg 10591 TDZE 1118 Apt Elev 1135
--	------------------------	--

ILS or LOC RWY 8
PHOENIX SKY HARBOR INTL (PHX)

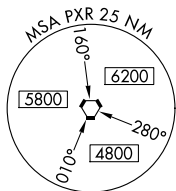
Simultaneous approach authorized with Rwy 7R and RNAV (RNP) Z Rwy 7L, RNAV (GPS) Y Rwy 7L. DME required.



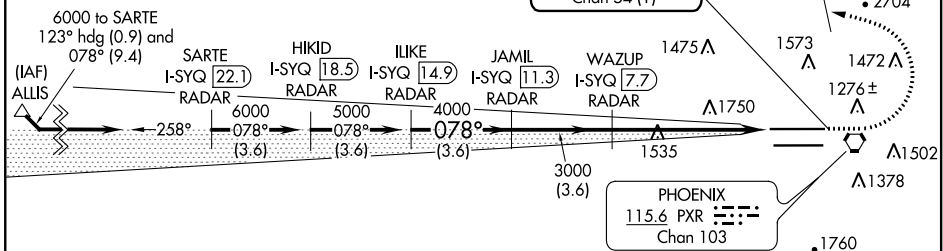
MISSED APPROACH: Climb to 3000, then climbing left turn to 5000 via heading 280° and PXR R-336 to AVENT/PXR 15.9 DME and hold.

D-ATIS 127.575	PHOENIX APP CON 128.65 353.9	PHOENIX TOWER 118.7 278.8 (Rwy 8-26) 120.9 254.3 (Rwy 7L-25R, 7R-25L)	GND CON 119.75 269.2 (N) 132.55 269.2 (S)	CLNC DEL 118.1 269.2	CPDLC
--------------------------	--	---	---	--------------------------------	-------

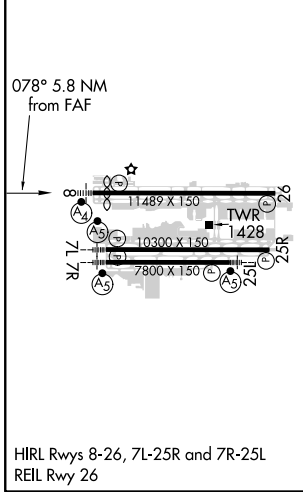
DME or RADAR REQUIRED



4171



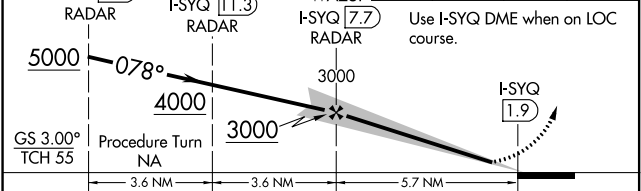
ELEV 1135	D	TDZE 1118
-----------	----------	-----------



VGSI and ILS glidepath not coincident (VGSI Angle 3.00/TCH 69).

3000	5000	PXR	AVENT
↑	hdg 280°	R-336	△

Use I-SYQ DME when on LOC course.



	A	B	C	D
S-ILS 8	1368-1 250 (300-1)			
S-LOC 8	1860-1 742 (800-1)	1860-1¼ 742 (800-1¼)	1860-2¼ 742 (800-2¼)	1860-2½ 742 (800-2½)
C CIRCLING	1860-1 725 (800-1)	1860-1¼ 725 (800-1¼)	2040-2¾ 905 (1000-2¾)	2560-3 1425 (1500-3)

SW-4, 09 SEP 2021 to 07 OCT 2021

SW-4, 09 SEP 2021 to 07 OCT 2021