


LOC/DME I-PHX 111.5 Chan 52	APP CRS 078°	Rwy Idg 10300 TDZE 1116 Apt Elev 1135
---	------------------------	--

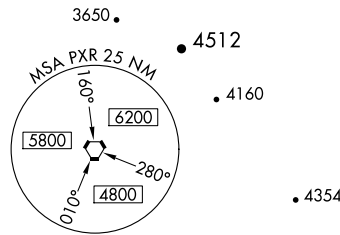
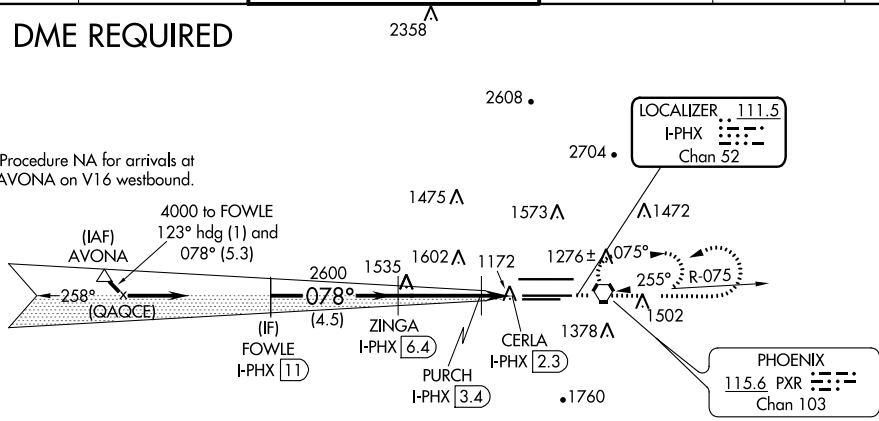
ILS or LOC/DME RWY 7L

PHOENIX SKY HARBOR INTL (PHX)

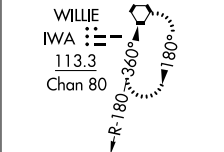
D-ATIS 127.575	PHOENIX APP CON 128.65 353.9	PHOENIX TOWER 118.7 278.8 (Rwy 8-26) 120.9 254.3 (Rwy 7L-25R, 7R-25L)	GND CON 119.75 269.2 (N) 132.55 269.2 (S)	CLNC DEL 118.1 269.2	CPDLC
		<p>For inoperative ALS, increase S-LOC 7L Cats C/D visibility to RVR 5500.</p> <p>MALSR </p> <p>MISSED APPROACH: Climb to 5000 then left turn direct PXR VORTAC and hold.</p>			

DME REQUIRED

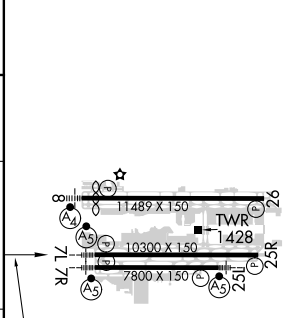
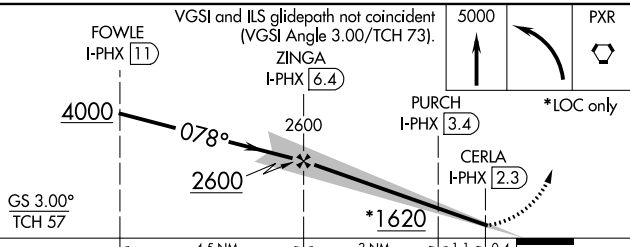
Procedure NA for arrivals at AVONNA on V16 westbound.



ALTERNATE MISSED APCH FIX



ELEV 1135	D TDZE 1116
-----------	--------------------



CATEGORY	A	B	C	D
S-ILS 7L	1326/24		210 (200-1/2)	
S-LOC 7L	1460/24	344 (400-1/2)	1460/30	344 (400-5/8)
C CIRCLING	1740-1	605 (700-1)	2040-2 3/4 905 (1000-2 3/4)	2560-3 1425 (1500-3)

078° 4.5 NM from FAF

HIRL Rwy 8-26, 7L-25R and 7R-25L
REIL Rwy 26

SW-4, 09 SEP 2021 to 07 OCT 2021

SW-4, 09 SEP 2021 to 07 OCT 2021