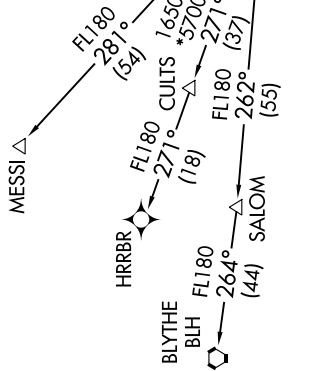


**TOP ALTITUDE:
8000**

D-AITS 127.575
CLNC DEL 118.1 269.2
CPDLC
GND CON 119.75 269.2 (NORTH)
132.55 269.2 (SOUTH)
PHOENIX TOWER 118.7 278.8 (Rwy 8-26)
120.9 254.3 (Rwys 7L-25R, 7R-25L)
PHOENIX DEP CON 126.8 269.6



- NOTE: RNAV 1.
- NOTE: Turbojets and turboprops only.
- NOTE: RADAR required.
- NOTE: DME/DME/IRU or GPS required.
- NOTE: Aircraft requesting FL220 and below must file BLYTHE TRANSITION.
- NOTE: Turbojets landing LAX, file MESSI TRANSITION.
- NOTE: Aircraft landing other than LAX and turboprops landing at LAX: Requesting FL240 and above, file HRRBR TRANSITION.

NOTE: Chart not to scale.

DEPARTURE ROUTE DESCRIPTION

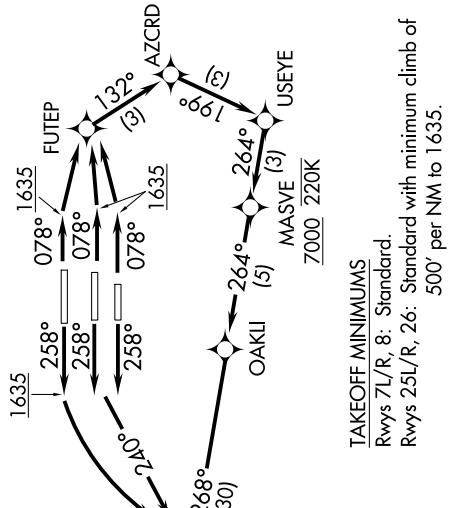
TAKEOFF RUNWAYS 7L/R, 8: Climb heading 078° to 1635, then direct FUTEF, then on track 132° to AZCRD, then on track 199° to USEYE, then on track 264° to cross MASVE at/above 7000 and at/below 220K, then on track 264° to OAKLI, then on track 268° to KEENS, thence. . . .

TAKEOFF RUNWAYS 25L/R: Climb heading 258° to intercept course 240° to WULKO, then on track 268° to KEENS, thence. . . .

TAKEOFF RUNWAY 26: Climb heading 258° to 1635, then left turn direct WULKO, then on track 268° to KEENS, thence. . . .

. . . on track 259° to IZZO, then on (transition). Maintain 8000, expect higher altitude 3 minutes after departure.

- BLYTHE TRANSITION (KEENS2.BLH)
- HRRBR TRANSITION (KEENS2.HRRBR)
- MESSI TRANSITION (KEENS2.MESSI)



TAKEOFF MINIMUMS

Rwys 7L/R, 8: Standard.
 Rwys 25L/R, 26: Standard with minimum climb of 500' per NM to 1635.