

APP CRS 258°	Rwy Idg TDZE Apt Elev	10300 1134 1135
------------------------	-----------------------------	--------------------------------------------

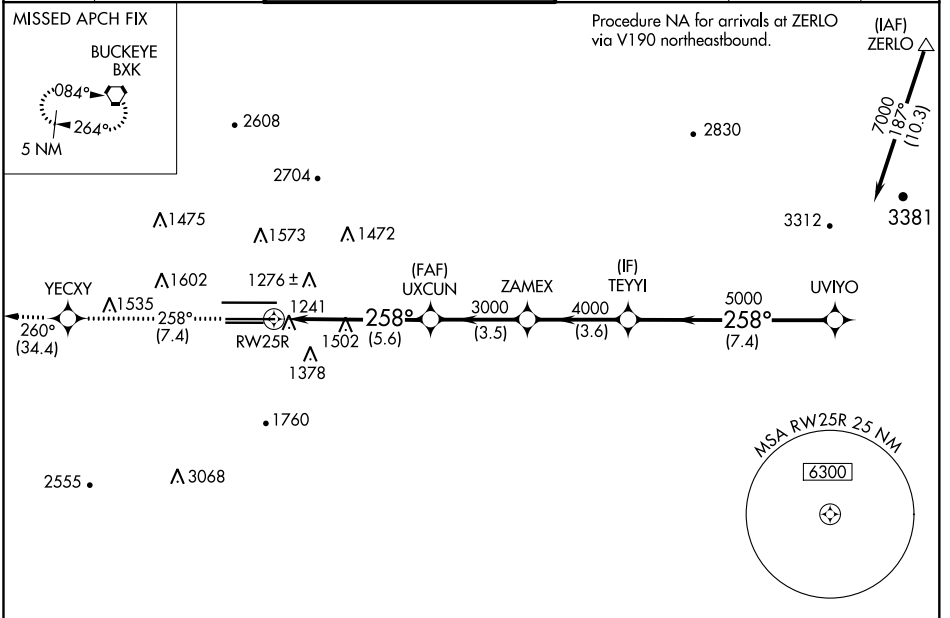
RNAV (RNP) Z RWY 25R

PHOENIX SKY HARBOR INTL (PHX)

▼ Visibility reduction by helicopters NA. GPS required. For uncompensated Baro-VNAV systems, procedure NA below 1°C (34°F) or above 46°C (116°F). Simultaneous approach authorized with ILS or LOC Rwy 26. Use of FD or AP providing RNAV track guidance required during simultaneous operations.

MISSED APPROACH: Climb to 5000 via track 258° to YECXY and via track 260° to BXK VORTAC and hold.

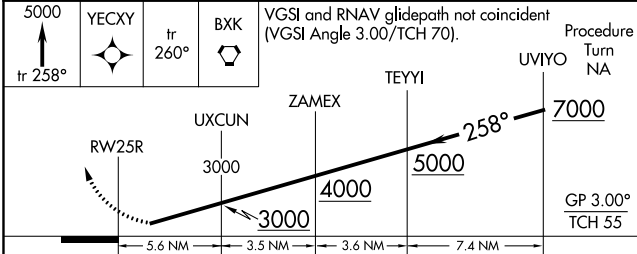
D-ATIS 127.575	PHOENIX APP CON 128.65 353.9	PHOENIX TOWER 118.7 278.8 (Rwy 8-26) 120.9 254.3 (Rwy 7L-25R, 7R-25L)	GND CON 119.75 269.2 (N) 132.55 269.2 (S)	CLNC DEL 118.1 269.2	CPDLC
--------------------------	----------------------------------------	-------------------------------------------------------------------------------------------	---------------------------------------------------------------	--------------------------------	-------



SW-4, 09 SEP 2021 to 07 OCT 2021

SW-4, 09 SEP 2021 to 07 OCT 2021

ELEV 1135	D TDZE 1134
-----------	--------------------



CATEGORY	A	B	C	D
RNP 0.20 DA		1597-1½	463 (500-1½)	
RNP 0.30 DA		1622-1¾	488 (500-1¾)	

AUTHORIZATION REQUIRED

