


APP CRS	Rwy Idg	10300
078°	TDZE	1116
	Apt Elev	1135

RNAV (RNP) Z RWY 7L

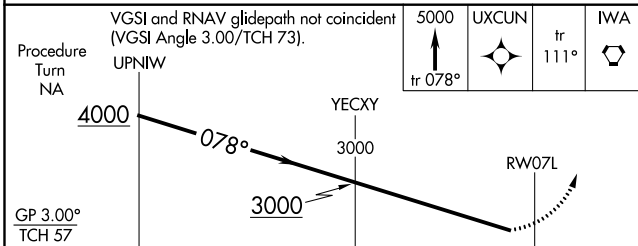
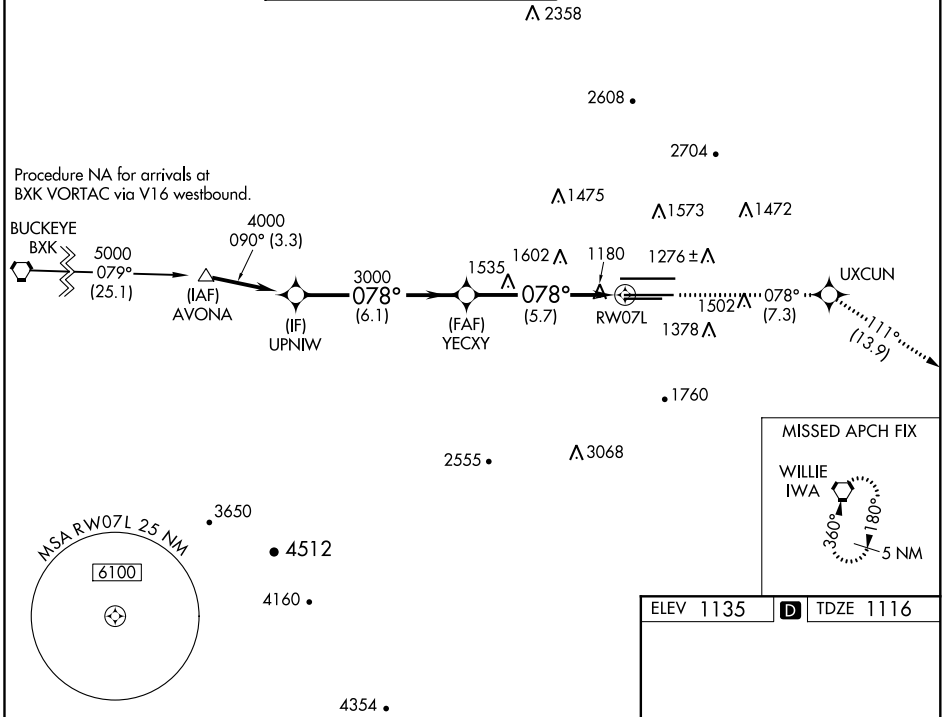
PHOENIX SKY HARBOR INTL (PHX)

▽ GPS required. Visibility reduction by helicopters NA. For uncompensated Baro-VNAV systems, procedure NA below 1°C (34°F) or above 46°C (116°F). For inoperative MALSR, increase RNP 0.30 all Cats visibility to 1 1/2 mile. Simultaneous approach authorized with ILS or LOC Rwy 8. Use of FD or AP providing RNAV track guidance required during simultaneous operations.

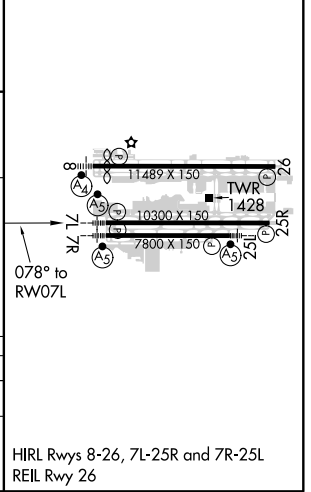
MALSR 

MISSED APPROACH:
Climb to 5000 via track 078° to UXCUN and via track 111° to IWA VORTAC and hold.

D-ATIS	PHOENIX APP CON	PHOENIX TOWER	GND CON	CLNC DEL	CPDLC
127.575	128.65 353.9	118.7 278.8 (Rwy 8-26) 120.9 254.3 (Rwy 7L-25R, 7R-25L)	119.75 269.2 (N) 132.55 269.2 (S)	118.1 269.2	



ELEV 1135	D TDZE 1116
-----------	--------------------



CATEGORY	A	B	C	D
RNP 0.30 DA	1523/50		407 (400-1)	

AUTHORIZATION REQUIRED

HIRL Rwy 8-26, 7L-25R and 7R-25L
REIL Rwy 26

SW-4, 09 SEP 2021 to 07 OCT 2021

SW-4, 09 SEP 2021 to 07 OCT 2021