


WAAS CH 82211 W25B	APP CRS 258°	Rwy Idg TDZE Apt Elev	7800 1126 1135
--	------------------------	-----------------------------	---

RNAV (GPS) Y RWY 25L

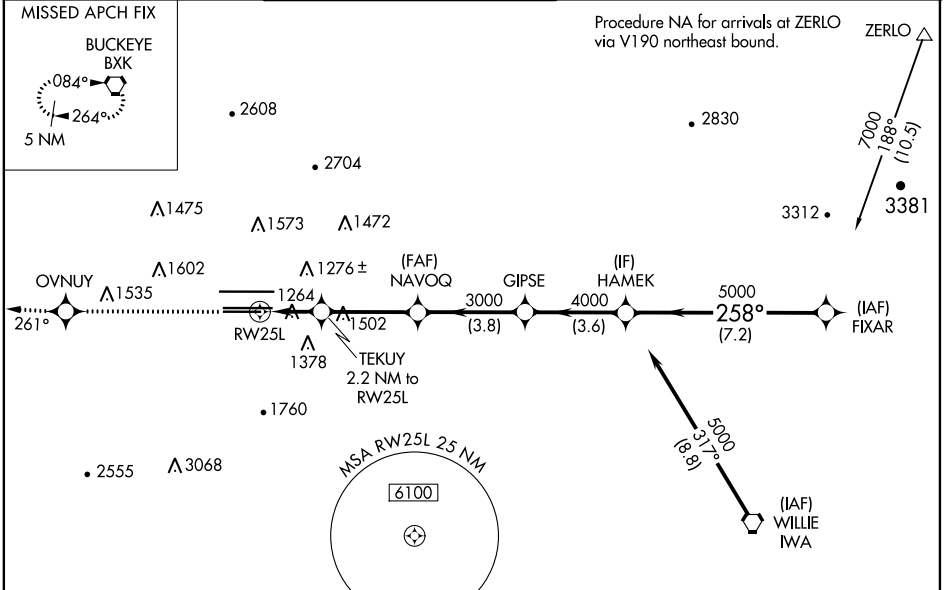
PHOENIX SKY HARBOR INTL (PHX)

⚠ For inop ALS, increase visibility LNAV/VNAV all Cats to 1½ SM. For uncompensated Baro-VNAV systems, LNAV/VNAV NA below -17°C (2°F) or above 46°C (114°F). DME/DME RNP-0.3 NA. Simultaneous approach authorized with ILS or LOC Rwy 26. Use of FD or AP providing RNAV track guidance required during simultaneous operations. LNAV procedure NA during simultaneous operations.

MALSR


MISSED APPROACH: Climb to 5000 direct OVNUY and via 261° track to BXX VORTAC and hold.

D-ATIS 127.575	PHOENIX APP CON 128.65 353.9	PHOENIX TOWER 118.7 278.8 (Rwy 8-26) 120.9 254.3 (Rwy 7L-25R, 7R-25L)	GND CON 119.75 269.2 (N) 132.55 269.2 (S)	CLNC DEL 118.1 269.2	CPDLC
--------------------------	--	---	---	--------------------------------	-------



ELEV 1135	D	TDZE 1126
-----------	----------	-----------

	5000	OVNUY	tr 261°	BXX	VGSI and RNAV glidepath not coincident (VGSI Angle 3.00/TCH 66).		
	*LNAV only.		TEKUY 2.2 NM to RW25L	NAVOQ	GIPSE	HAMEK	FIXAR
	1.5 NM to RW25L		1880		3000	7000	
	1.5 NM		0.7 NM	3.4 NM	3.8 NM	3.6 NM	7.2 NM
	258° to RW25L		Procedure Turn NA		GP 3.00° TCH 49		
CATEGORY	A		B		C	D	
LPV DA			1482-¾		356 (400-¾)		
LNAV/VNAV DA			1613-¼		487 (500-¼)		
LNAV MDA	1680-½		554 (600-½)		1680-¼ 554 (600-¼)		
C CIRCLING	1740-1		605 (700-1)		2040-2¾ 905 (1000-2¾)		
					2560-3 1425 (1500-3)		

SW-4, 09 SEP 2021 to 07 OCT 2021

SW-4, 09 SEP 2021 to 07 OCT 2021