


WAAS CH 73011 W07B	APP CRS 078°	Rwy Idg TDZE 1116 Apt Elev 1135
--	------------------------	---

RNAV (GPS) Y RWY 7R

PHOENIX SKY HARBOR INTL (PHX)

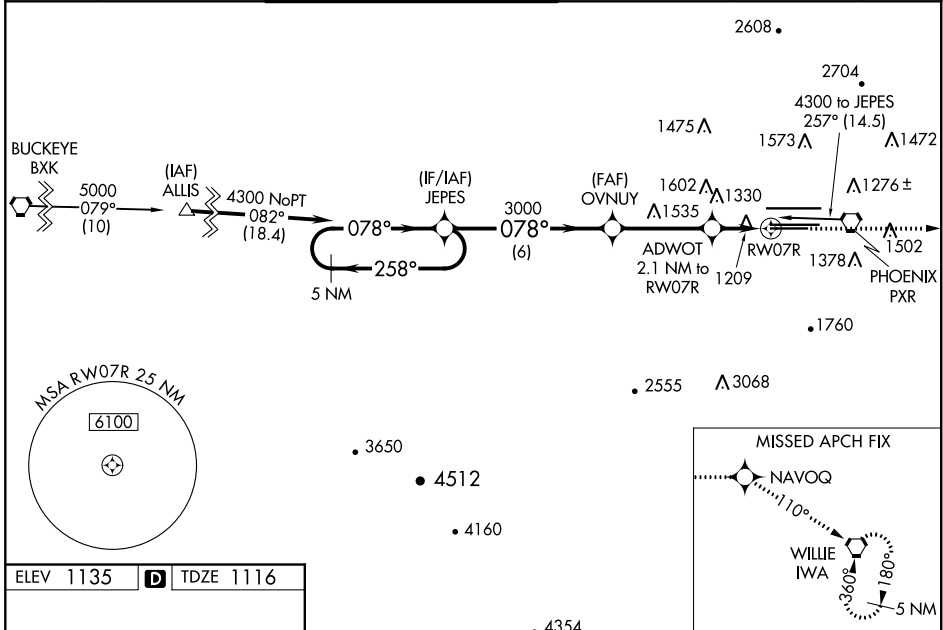
⚠ For inop ALS, increase visibility LPV all Cats to 3/4 SM, LNAV/VNAV all Cats to 1 1/8 SM, LNAV Cats A/B to 1 SM and C/D to 1 3/8 SM. For uncompensated Baro-VNAV systems, LNAV/VNAV NA below -17°C (2°F) or above 46°C (114°F). DME/DME RNP-0.3 NA. Rwy 7R helicopter visibility reduction below 3/4 SM NA. Simultaneous approach authorized with ILS or LOC Rwy 8. Use of FD or AP providing RNAV track guidance required during simultaneous operations. LNAV procedure NA during simultaneous operations.

MALSR

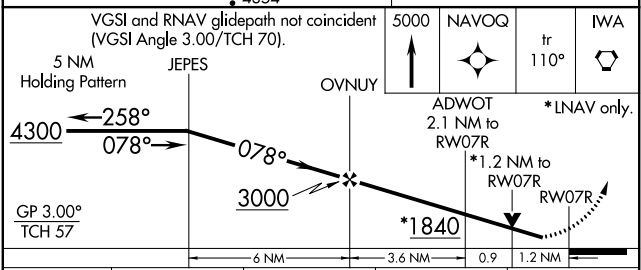
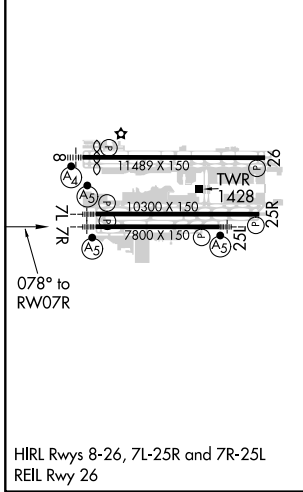


MISSED APPROACH: Climb to 5000 direct NAVOQ and via 110° track to IWA VORTAC and hold.

D-ATIS 127.575	PHOENIX APP CON 128.65 353.9	PHOENIX TOWER 118.7 278.8 (Rwy 8-26) 120.9 254.3 (Rwy 7L-25R, 7R-25L)	GND CON 119.75 269.2 (N) 132.55 269.2 (S)	CLNC DEL 118.1 269.2	CPDLC
--------------------------	--	---	---	--------------------------------	-------



ELEV 1135	D	TDZE 1116
-----------	----------	-----------



CATEGORY	A	B	C	D
LPV DA		1390-3/4	274 (300-3/4)	
LNAV/VNAV DA		1520-1	404 (400-1)	
LNAV MDA	1580-3/4	464 (500-3/4)	1580-1	464 (500-1)
C CIRCLING	1740-1	605 (700-1)	2040-2 3/4 905 (1000-2 3/4)	2560-3 1425 (1500-3)

SW-4, 09 SEP 2021 to 07 OCT 2021

SW-4, 09 SEP 2021 to 07 OCT 2021