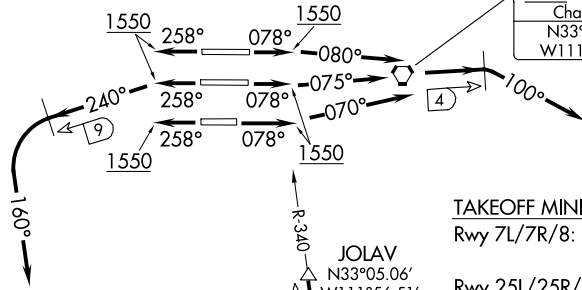


STANFIELD FOUR DEPARTURE

**TOP ALTITUDE:
8000**

D-ATIS
127.575
CLNC DEL
118.1 269.2
CPDLC
GND CON
119.75 269.2 (NORTH)
132.55 269.2 (SOUTH)
PHOENIX TOWER
118.7 278.8 (Rwy 8-26)
120.9 254.3 (Rwys 7L-25R, 7R-25L)
PHOENIX DEP CON
126.8 269.6

PHOENIX
115.6 PXR
Chan 103
N33°25.98'
W111°58.21'



TAKEOFF MINIMUMS

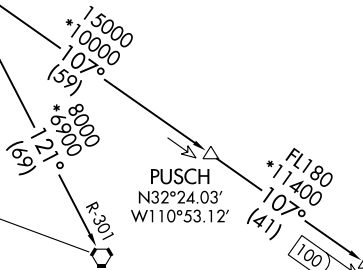
Rwy 7L/7R/8: Standard with minimum climb of 300' per NM to 8000.
Rwy 25L/25R/26: Standard with minimum climb of 350' per NM to 8000.

NOTE: STANFIELD DEPARTURE restricted to turbojet and turboprop aircraft only.

NOTE: RADAR and DME required.

STANFIELD
114.8 TFD
Chan 95
N32°53.15'-W111°54.52'

TUCSON
116.0 TUS
Chan 107
N32°05.71'-W110°54.89'
L-5, H-4



NOTE: Chart not to scale.

DEPARTURE ROUTE DESCRIPTION

TAKEOFF RUNWAY 8: Climb heading 078° to 1550, then climbing right turn heading 080°, at 4 DME east of PXR VORTAC, climbing right turn heading 100°. Thence. . .

TAKEOFF RUNWAY 7L: Climb heading 078° to 1550, then climbing left turn heading 075°, at 4 DME east of PXR VORTAC, climbing right turn heading 100°. Thence. . .

TAKEOFF RUNWAY 7R: Climb heading 078° to 1550, then climbing left turn heading 070°, at 4 DME east of PXR VORTAC, climbing right turn heading 100°. Thence. . .

TAKEOFF RUNWAY 25L/25R/26: Climb heading 258° to 1550, then climbing left turn heading 240°, at 9 DME west of PXR VORTAC, climbing left turn heading 160°. Thence. . .

. . . maintain 8000, expect RADAR vectors to TFD R-340 to TFD VORTAC. Thence via (Transition). Expect further clearance to filed altitude 3 minutes after departure.

LOST COMMUNICATIONS: Expect filed altitude 3 minutes after departure.

OLIIIN TRANSITION (TFD4.OLIIIN): From over TFD VORTAC on TFD R-107 to OLIIIN INT.

TUCSON TRANSITION (TFD4.TUS): From over TFD VORTAC on TFD R-121 and TUS R-301 to TUS VORTAC.

STANFIELD FOUR DEPARTURE