

HARBOR VISUAL RWY 29

AL-329 (FAA)

PORTLAND INTL JETPORT (PWM)
PORTLAND, MAINE

ATIS 119.05
 PORTLAND APP CON ★
 119.75 269.35
 PORTLAND TOWER ★
 120.9 (CTAF) 257.8
 GND CON
 121.9
 UNICOM 122.95

RADAR REQUIRED

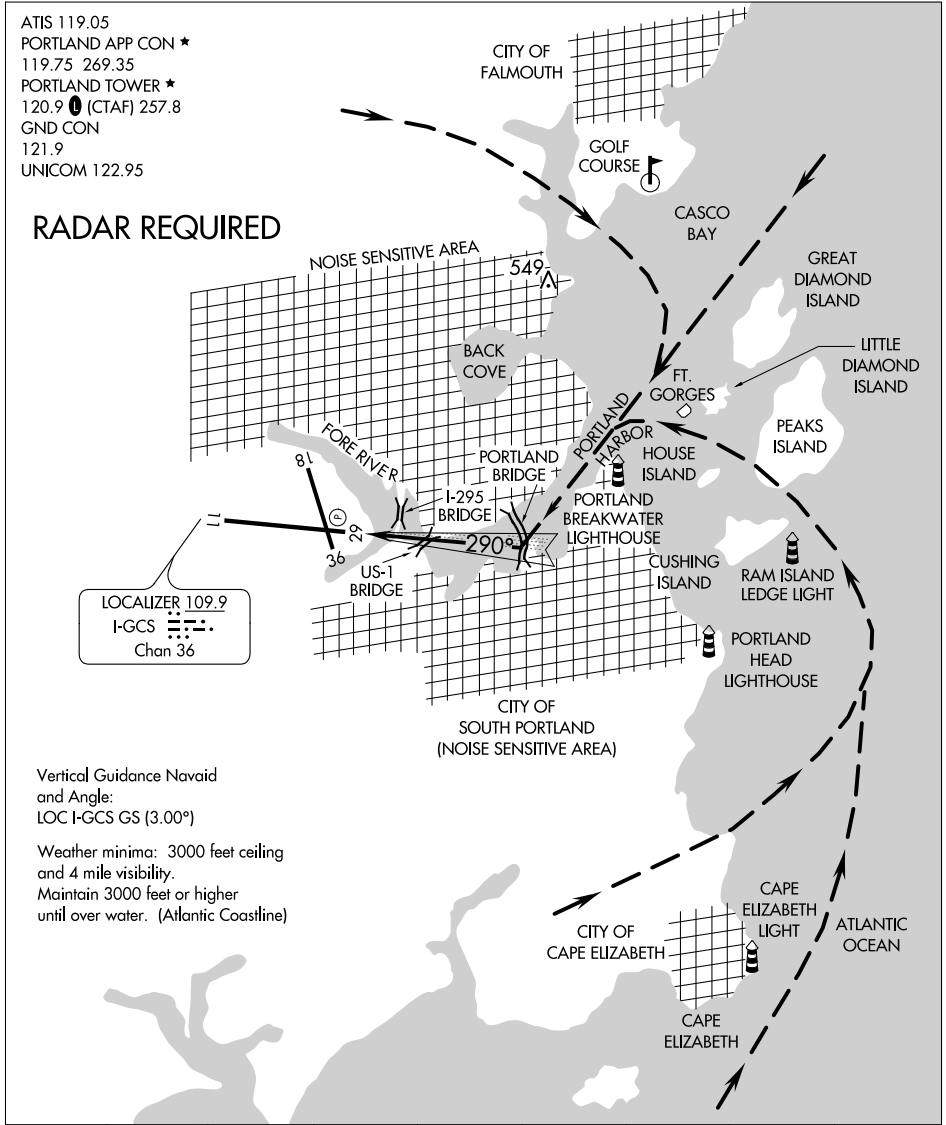
LOCALIZER 109.9
 I-GCS
 Chan 36

Vertical Guidance Navaid
 and Angle:
 LOC I-GCS GS (3.00°)

Weather minima: 3000 feet ceiling
 and 4 mile visibility.
 Maintain 3000 feet or higher
 until over water. (Atlantic Coastline)

NE-1, 09 SEP 2021 to 07 OCT 2021

NE-1, 09 SEP 2021 to 07 OCT 2021



1 NM	2	3	4	5	6	7	8
------	---	---	---	---	---	---	---

PROCEDURE NOT AUTHORIZED AT NIGHT.

HARBOR VISUAL RWY 29

Amdt 2 10MAR11

43°39'N-70°19'W

PORTLAND, MAINE
PORTLAND INTL JETPORT (PWM)