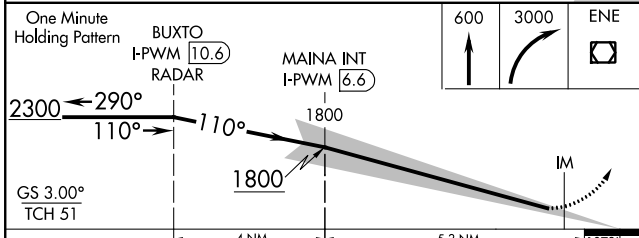
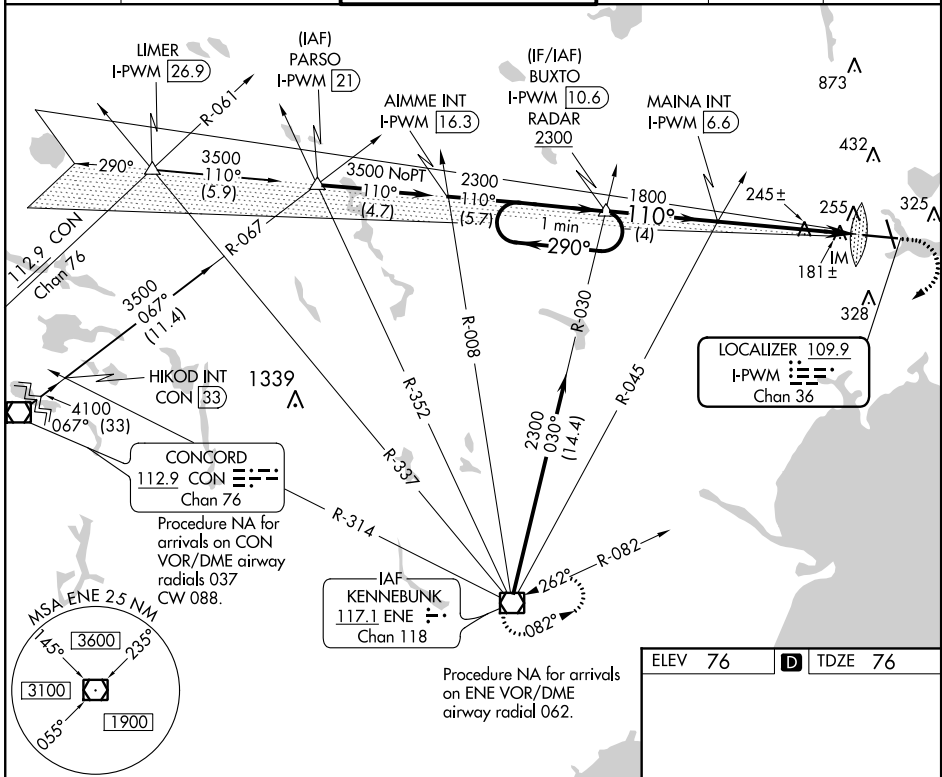


LOC/DME I-PWM 109.9 Chan 36	APP CRS 110°	Rwy ldg 7200 TDZE 76 Apt Elev 76
---	------------------------	---

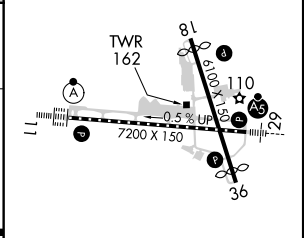
ILS RWY 11 (SA CAT I)

PORTLAND INTL JETPORT (PWM)

<p>Procedure NA when control tower closed. Requires specific OPSPEC, MSPEC, or LOA approval and use of HUD to DH.</p>	ALSIF-2	MISSED APPROACH: Climb to 600 then climbing right turn to 3000 direct ENE VOR/DME and hold.											
	<table border="1"> <tr> <th>ATIS</th> <th>PORTLAND APP CON *</th> <th>PORTLAND TOWER *</th> <th>GND CON</th> <th>CLNC DEL</th> <th>UNICOM</th> </tr> <tr> <td>119.05</td> <td>119.75 269.35</td> <td>120.9 (CTAF) 257.8</td> <td>121.9</td> <td>121.9</td> <td>122.95</td> </tr> </table>	ATIS	PORTLAND APP CON *	PORTLAND TOWER *	GND CON	CLNC DEL	UNICOM	119.05	119.75 269.35	120.9 (CTAF) 257.8	121.9	121.9	122.95
ATIS	PORTLAND APP CON *	PORTLAND TOWER *	GND CON	CLNC DEL	UNICOM								
119.05	119.75 269.35	120.9 (CTAF) 257.8	121.9	121.9	122.95								



ELEV 76	D TDZE 76
---------	------------------



CATEGORY	A	B	C	D
S-ILS 11	RA 166/14		150 DA 226	

SA CATEGORY I ILS - SPECIAL AIRCREW & AIRCRAFT CERTIFICATION REQUIRED

- TDZ/CL Rwy 11
- MIRL Rwy 18-36
- HIRL Rwy 11-29
- REIL Rwy 18 and 36

NE-1, 09 SEP 2021 to 07 OCT 2021

NE-1, 09 SEP 2021 to 07 OCT 2021