

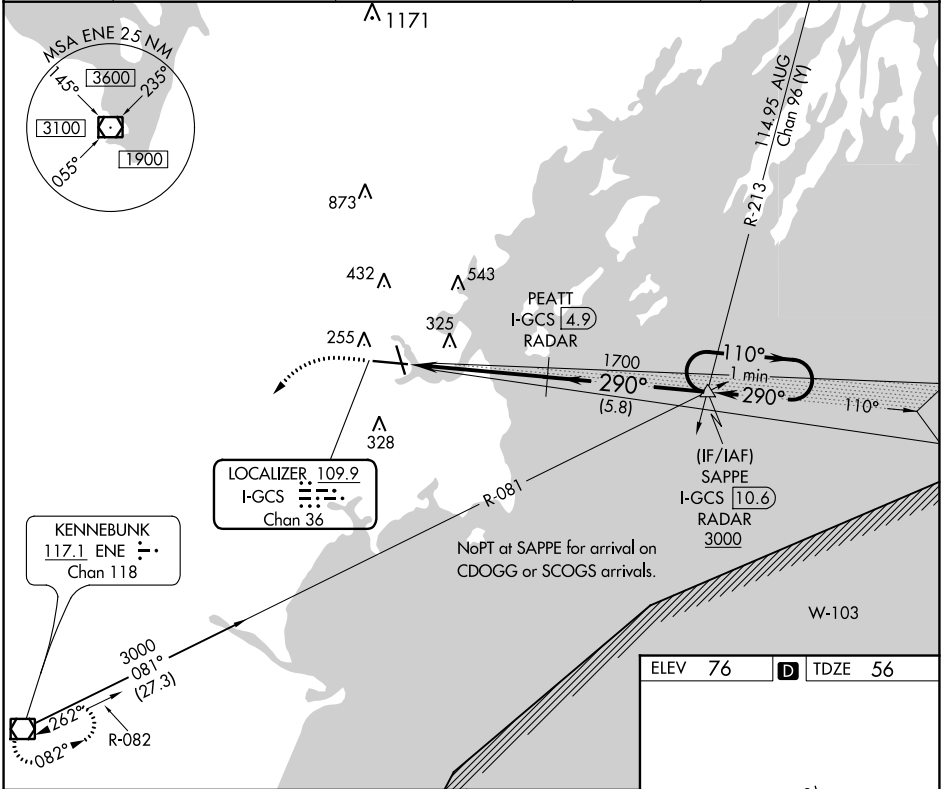
LOC/DME I-GCS 109.9 Chan 36	APP CRS 290°	Rwy Idg 7200 TDZE 56 Apt Elev 76
--	------------------------	---

ILS or LOC RWY 29

PORTLAND INTL JETPORT (P^WM)

▽ ▲	**RVR 1800 authorized with use of FD or AP or HUD to DA. DME or RADAR required.	MALSR 	MISSED APPROACH: Climb to 700 then climbing left turn to 3000 direct ENE VOR/DME and hold.
----------------------	--	-----------	--

ATIS 119.05	PORTLAND APP CON * 119.75 269.35	PORTLAND TOWER * 120.9 (CTAF) 257.8	GND CON 121.9	CLNC DEL 121.9	UNICOM 122.95
-----------------------	--	--	-------------------------	--------------------------	-------------------------



700	3000	ENE	PEATT I-GCS 4.9 RADAR	SAPPE I-GCS 10.6 RADAR	One Minute Holding Pattern
* LOC only	I-GCS DME ANTENNA	I-GCS 1.4	1700	1700	110° → 3000
					← 290°
					GS 3.00° TCH 50
					290° 5.1 NM from FAF
CATEGORY	A	B	C	D	
S-ILS 29**	256/24 200 (200-½)				
S-LOC 29	580/24	524 (600-½)	580/55	524 (600-1)	
CIRCLING	620-1 544 (600-1)	640-1 564 (600-1)	740-1¾ 664 (700-1¾)	860-2½ 784 (800-2½)	

ELEV 76	TDZE 56
TDZ/CL Rwy 11	MIRL Rwy 18-36
HIRL Rwy 11-29	REIL Rws 18 and 36
FAF to MAP 5.1 NM	
Knots	60 90 120 150 180
Min:Sec	5:06 3:24 2:33 2:02 1:42

NE-1, 09 SEP 2021 to 07 OCT 2021

NE-1, 09 SEP 2021 to 07 OCT 2021