

WAAS CH <b>77925</b> <b>W18A</b>	APP CRS <b>178°</b>	Rwy Idg TDZE Apt Elev	<b>5150</b> <b>50</b> <b>76</b>
--	------------------------	-----------------------------	---------------------------------------

# RNAV (GPS) RWY 18

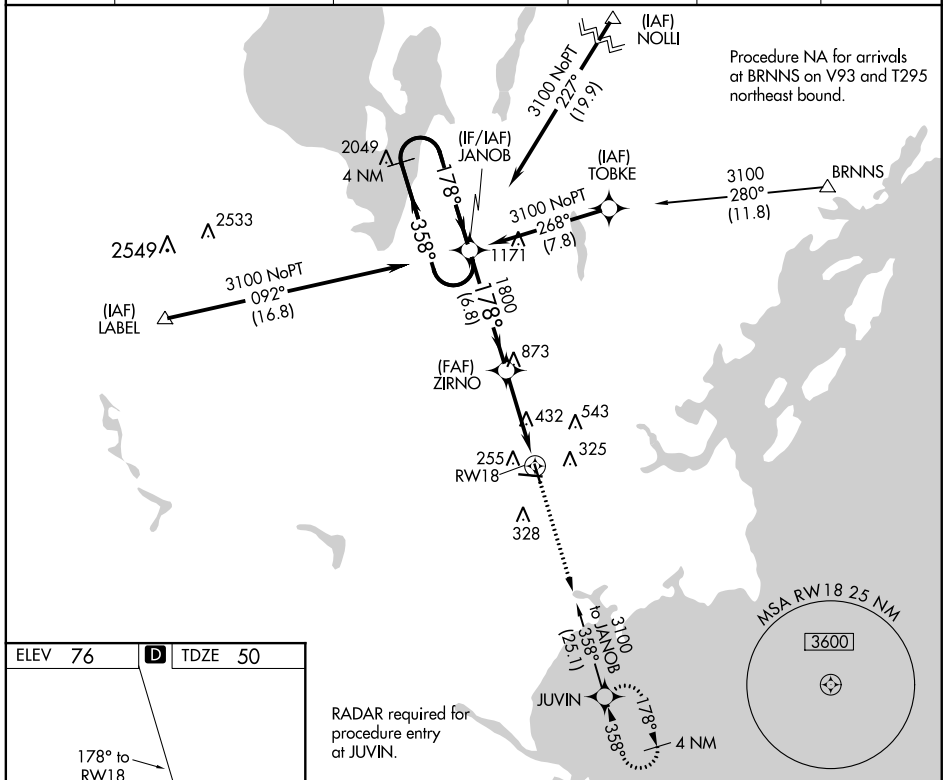
PORTLAND INTL JETPORT (P<sup>WM</sup>)

RNP APCH.

**▼** For uncompensated Baro-VNAV systems, LNAV/VNAV NA below -19°C (-2°F)  
**▲** or above 54°C (130°F). Rwy 18 helicopter visibility reduction below  $\frac{3}{4}$  SM NA.

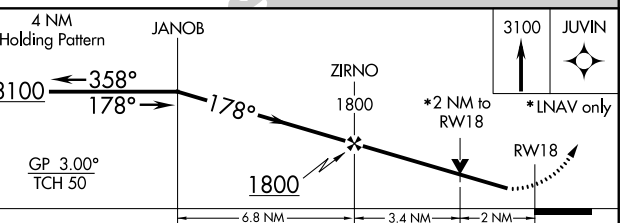
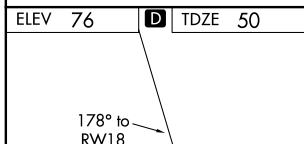
MISSED APPROACH: Climb to 3100 direct JUVIN and hold, continue climb-in-hold to 3100.

ATIS <b>119.05</b>	PORTLAND APP CON ★ <b>119.75 269.35</b>	PORTLAND TOWER ★ <b>120.9</b> (CTAF) <b>257.8</b>	GND CON <b>121.9</b>	CLNC DEL <b>121.9</b>	UNICOM <b>122.95</b>
-----------------------	--	--	-------------------------	--------------------------	-------------------------



NE-1, 09 SEP 2021 to 07 OCT 2021

NE-1, 09 SEP 2021 to 07 OCT 2021



CATEGORY	A	B	C	D
LPV DA		300- $\frac{3}{4}$	250 (300- $\frac{3}{4}$ )	
LNAV/VNAV DA		477-1 $\frac{1}{2}$	427 (500-1 $\frac{1}{2}$ )	
LNAV MDA	740-1	690 (700-1)	740-2	690 (700-2)
<b>C</b> CIRCLING	740-1	664 (700-1)	740-2	860-2 $\frac{1}{2}$ 784 (800-2 $\frac{1}{2}$ )