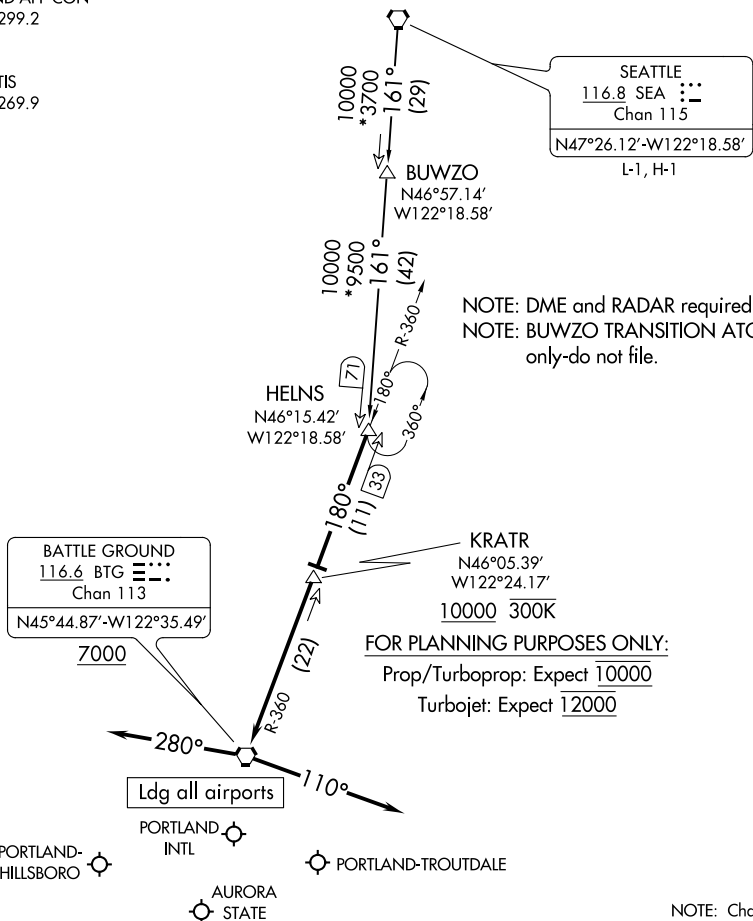


(HELNS.HELNS6) 20198  
**HELNS SIX ARRIVAL**

AL-330 (FAA)

PORTLAND, OREGON

PORTLAND APP CON  
 124.35 299.2  
 HIO ATIS  
 127.65  
 PDX D-ATIS  
 128.35 269.9



NOTE: DME and RADAR required.  
 NOTE: BUWZO TRANSITION ATC assigned  
 only-do not file.

**FOR PLANNING PURPOSES ONLY:**

Prop/Turboprop: Expect 10000  
 Turbojet: Expect 12000

NOTE: Chart not to scale.

**ARRIVAL ROUTE DESCRIPTION**

**BUWZO TRANSITION (BUWZO.HELNS6):** From over BUWZO via SEA R-161 to HELNS. Thence. . . .

**SEATTLE TRANSITION (SEA.HELNS6):** From over SEA VORTAC via SEA R-161 to HELNS. Thence. . . .

. . . . from over HELNS on BTG VORTAC R-360 to cross KRATR at or above 10000, then as depicted to cross BTG VORTAC at or above 7000.

**LANDING EAST:** From BTG VORTAC heading 280°, expect RADAR vectors to final approach course.

**LANDING WEST:** From BTG VORTAC heading 110°, expect RADAR vectors to final approach course.

**HELNS SIX ARRIVAL**  
 (HELNS.HELNS6) 29MAR18

PORTLAND, OREGON

NW-1, 09 SEP 2021 to 07 OCT 2021

NW-1, 09 SEP 2021 to 07 OCT 2021