

LOC/DME I-ARJ <b>109.3</b> Chan 30	APP CRS <b>227°</b>	Rwy Idg <b>8700</b> TDZE <b>50</b> Apt Elev <b>54</b>
--	------------------------	---

**ILS RWY 23** (SA CAT I & II)  
THEODORE FRANCIS GREEN STATE (PVD)

DME or RADAR required for procedure entry.

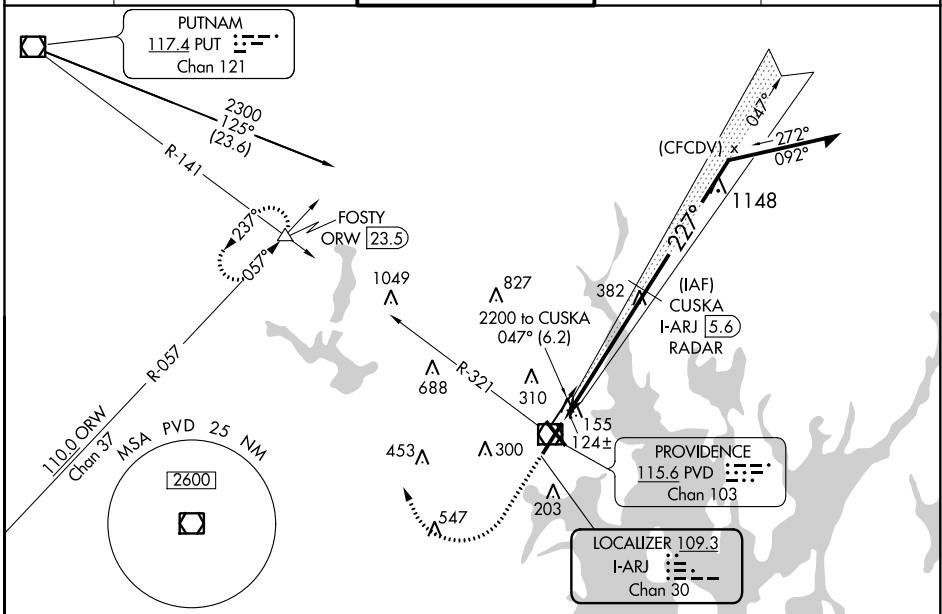
**SA Cat I:** Requires specific OPSPEC, MSPEC, or LOA approval and use of HUD to DH.

**SA CAT II:** Reduced Lighting: Requires specific OPSPEC, MSPEC, or LOA approval and use of Autoland or HUD to touchdown. Procedure NA when tower closed.



**MISSED APPROACH:** Climb to 700 then climbing right turn to 2500 on heading 350° and PVD VOR/DME R-321 to FOSTY INT/ORW 23.5 DME and hold.

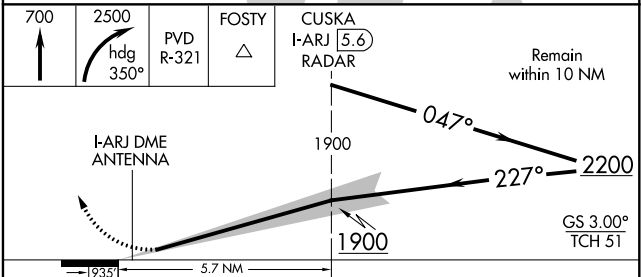
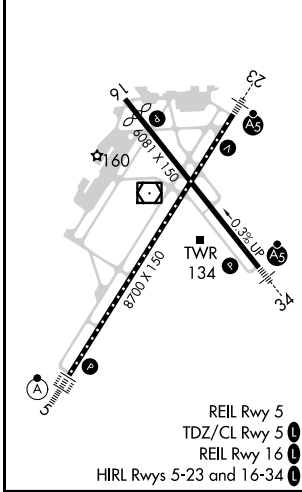
D-ATIS <b>124.2</b>	PROVIDENCE APP CON * <b>123.675 244.875</b>	PROVIDENCE TOWER * <b>120.7</b> (CTAF) <b>257.8</b>	GND CON <b>121.9 348.6</b>	CLNC DEL <b>126.65 348.6</b>
------------------------	--	--	-------------------------------	---------------------------------



NE-1, 09 SEP 2021 to 07 OCT 2021

NE-1, 09 SEP 2021 to 07 OCT 2021

ELEV 54	<b>D</b>	TDZE 50
---------	----------	---------



CATEGORY	A	B	C	D
S-ILS 23	SA CAT I	RA 163/14	150 DA 200	
S-ILS 23	SA CAT II	RA 103/12	100 DA 150	

**SA CATEGORY I & II ILS - SPECIAL AIRCREW & AIRCRAFT CERTIFICATION REQUIRED**