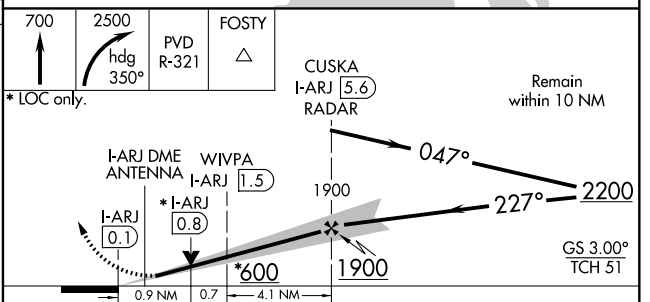
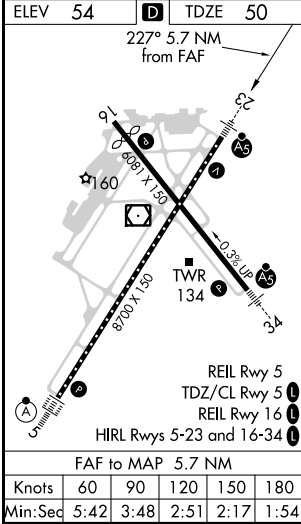
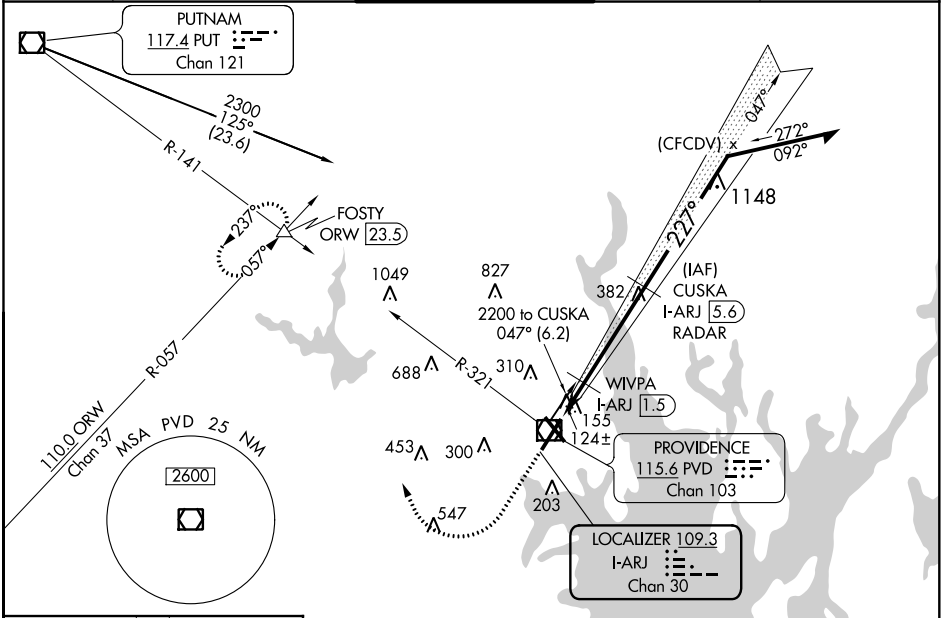


|  |                        |   |
|--|------------------------|---|
| LOC/DME I-ARJ<br><b>109.3</b><br>Chan 30 | APP CRS<br><b>227°</b> | Rwy Idg <b>8700</b><br>TDZE <b>50</b><br>Apt Elev <b>54</b> |
|--|------------------------|---|

# ILS or LOC RWY 23

THEODORE FRANCIS GREEN STATE (PVD)

|  |  |   |  |                                 |  |
|--|--|---|--|---------------------------------|--|
| DME or RADAR required for procedure entry.                   |  | MALSR<br>                                       | MISSED APPROACH: Climb to 700 then climbing right turn to 2500 on heading 350° and PVD VOR/DME R-321 to FOSTY INT/ORW 23.5 DME and hold. |                                 |  |
| **RVR 1800 authorized with use of FD or AP or HUD to DA.<br> |  |   |  |                                 |  |
| D-ATIS<br><b>124.2</b>                                       | PROVIDENCE APP CON *<br><b>123.675 244.875</b> | PROVIDENCE TOWER *<br><b>120.7 (CTAF) 257.8</b> | GND CON<br><b>121.9 348.6</b>  | CLNC DEL<br><b>126.65 348.6</b> |  |



| CATEGORY           | A                    | B                    | C                      | D                      |
|--------------------|----------------------|----------------------|------------------------|------------------------|
| S-ILS 23**         | 250/24 200 (200-½)   |                      |                        |                        |
| S-LOC 23           | 600/24               | 550 (600-½)          | 600/60                 | 550 (600-1¼)           |
| CIRCLING           | 600-1<br>546 (600-1) | 640-1<br>586 (600-1) | 640-1½<br>586 (600-1½) | 860-2½<br>806 (900-2½) |
| WIVPA FIX MINIMUMS |                      |                      |                        |                        |
| S-LOC 23           | 380/24               | 330 (400-½)          | 380/26                 | 330 (400-½)            |
| CIRCLING           | 560-1<br>506 (600-1) | 640-1<br>586 (600-1) | 640-1½<br>586 (600-1½) | 860-2½<br>806 (900-2½) |

NE-1, 09 SEP 2021 to 07 OCT 2021

NE-1, 09 SEP 2021 to 07 OCT 2021