

LOC/DME I-PVD <b>109.3</b> Chan 30	APP CRS <b>047°</b>	Rwy Idg <b>8700</b> TDZE <b>53</b> Apt Elev <b>54</b>
--	------------------------	---

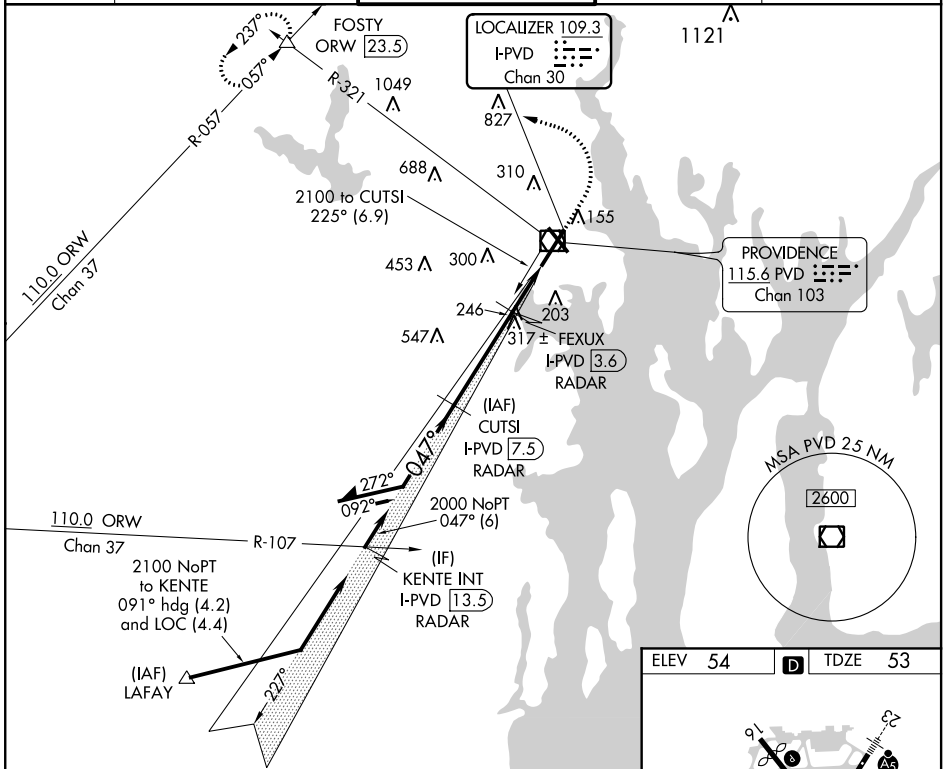
# ILS or LOC RWY 5

THEODORE FRANCIS GREEN STATE (PVD)

**▽** When tower closed: increase S-ILS 5 all Cats and S-LOC 5 Cats A and B visibilities to ¾ SM, and S-LOC 5 Cats C and D visibility to 1 SM.  
**△** When control tower closed, for inop ALS, increase S-LOC 5 Cats C and D visibility to 1½ SM. RADAR or DME required for localizer minimums.

ALSF-2 MISSED APPROACH: Climb to 800 then climbing left turn to 2500 on heading 270° and PVD VOR/DME R-321 to FOSTY INT/ORW 23.5 DME and hold.

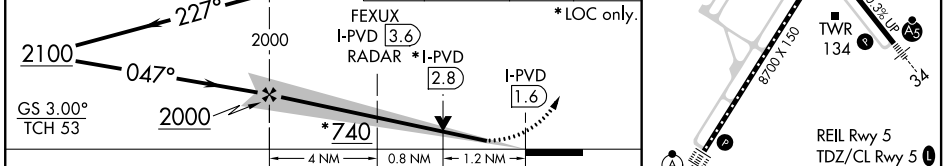
D-ATIS <b>124.2</b>	PROVIDENCE APP CON ★ <b>123.675 244.875</b>	PROVIDENCE TOWER ★ <b>120.7 (CTAF) 257.8</b>	GND CON <b>121.9 348.6</b>	CLNC DEL <b>126.65 348.6</b>
------------------------	--	---	-------------------------------	---------------------------------



NE-1, 09 SEP 2021 to 07 OCT 2021

NE-1, 09 SEP 2021 to 07 OCT 2021

Remain within 10 NM	CUTSI I-PVD 7.5 (RADAR)	800	2500	PVD R-321	FOSTY
---------------------	-------------------------	-----	------	-----------	-------



CATEGORY	A	B	C	D
S-ILS 5	253/18		200 (200-½)	
S-LOC 5	500/24 447 (500-½)		500/45 447 (500-¾)	
CIRCLING	560-1 506 (600-1)	640-1 586 (600-1)	640-1½ 586 (600-1½)	860-2½ 806 (900-2½)

ELEV 54	TDZE 53
Knots	60 90 120 150 180
Min:Sec	6:00 4:00 3:00 2:24 2:00