

WAAS CH 58023 W34A	APP CRS 337°	Rwy Idg TDZE Apt Elev	6081 50 54
--	------------------------	-----------------------------	---------------------------------------

RNAV (GPS) RWY 34

THEODORE FRANCIS GREEN STATE (PVD)

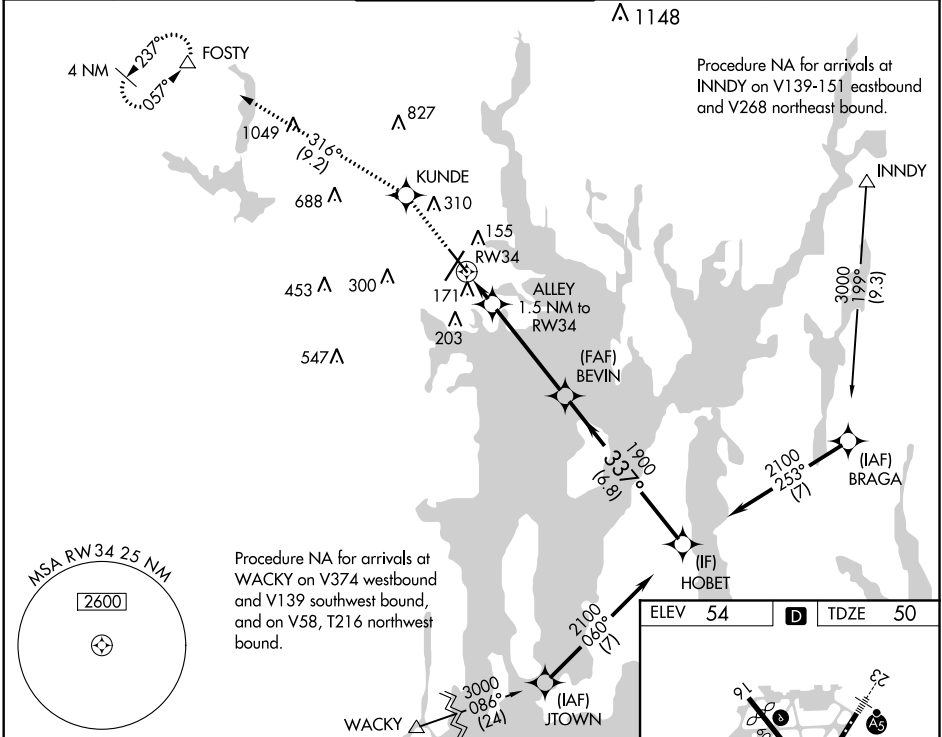
RNP APCH

▽ For uncompensated Baro-VNAV systems, LNAV/VNAV NA below -16°C or above 34°C. For inop MALS, increase LNAV/VNAV all Cats visibility to RVR 5000. For inop MALS, increase LNAV Cat A/B visibility to RVR 5500, and Cat C/D visibility to RVR 6000. Rwy 34 helicopter visibility reduction below RVR 4000 NA.



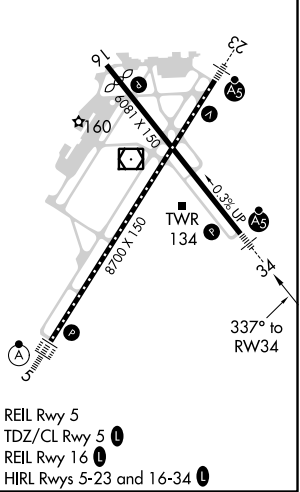
MISSED APPROACH:
Climb to 2500 direct KUNDE and on track 316° to FOSTY and hold.

D-ATIS 124.2	PROVIDENCE APP CON * 123.675 244.875	PROVIDENCE TOWER * 120.7 (CTAF) 0 257.8	GND CON 121.9 348.6	CLNC DEL 126.65 348.6
------------------------	--	---	-------------------------------	---------------------------------



2500	KUNDE	tr 316°	FOSTY	VGSI and RNAV glidepath not coincident (VGSI Angle 3.00/TCH 60.)	HOBET
*LNAV only.	ALLEY 1.5 NM to RW34		BEVIN 1900	337°	2100
	RW34			1900	GP 3.00° TCH 53
	1.5 NM	4.2 NM	6.8 NM		

ELEV 54	D	TDZE 50
---------	----------	---------



CATEGORY	A	B	C	D
LPV DA		330/40	280 (300-¾)	
LNAV/VNAV DA		349/40	299 (300-¾)	
LNAV MDA		440/40	390 (400-¾)	
C CIRCLING	560-1 506 (600-1)	640-1 586 (600-1)	640-1½ 586 (600-1½)	860-2½ 806 (900-2½)

REIL Rwy 5
TDZ/CL Rwy 5 **Ⓛ**
REIL Rwy 16 **Ⓛ**
HIRL Rws 5-23 and 16-34 **Ⓛ**

NE-1, 09 SEP 2021 to 07 OCT 2021

NE-1, 09 SEP 2021 to 07 OCT 2021