

APP CRS	Rwy Idg	8700
227°	TDZE	50
	Apt Elev	55

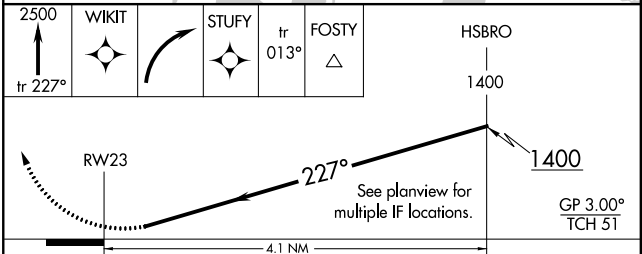
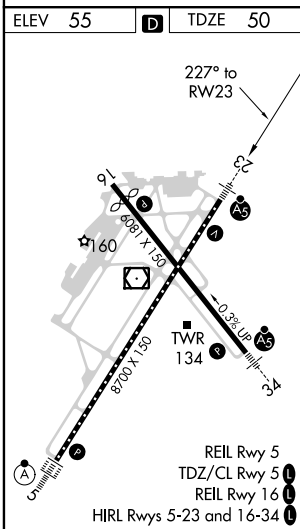
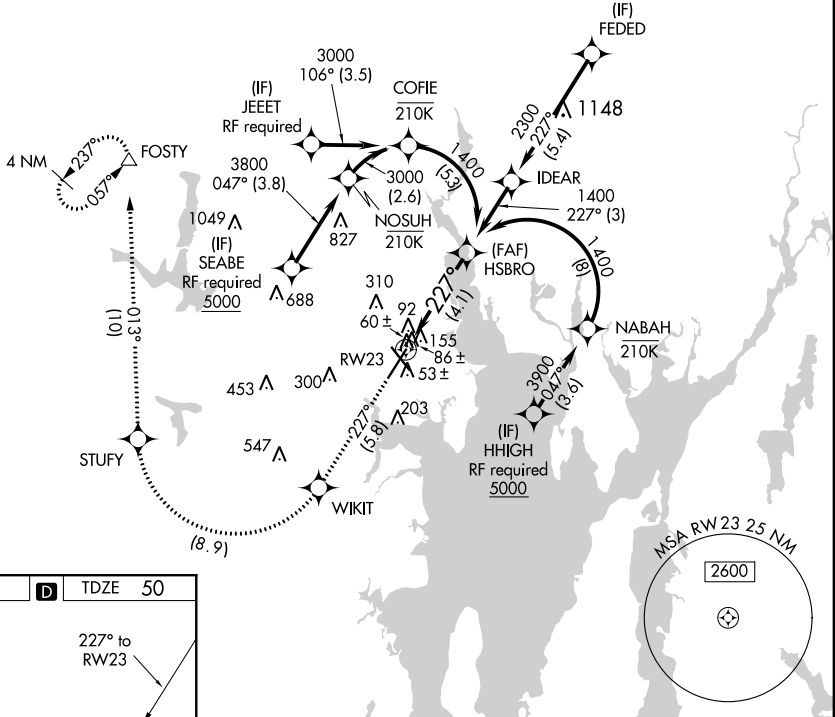
RNAV (RNP) Z RWY 23

THEODORE FRANCIS GREEN STATE (PVD)

<p>▼ For uncompensated Baro-VNAV systems, procedure NA below -15°C (5°F) or above 48°C (118°F). RF required. For inop MALSRL, increase RNP 0.30 all Cats visibility to 1¼. GPS Required.</p>	<p>MALSRL</p>	<p>Climb to 2500 on track 227° to WIKIT and right turn to STUFY and on track 013° to FOSTY and hold.</p>
---	---------------	--

D-ATIS 124.2	PROVIDENCE APP CON * 123.675 244.875	PROVIDENCE TOWER * 120.7 (CTAF) 257.8	GND CON 121.9 348.6	CLNC DEL 126.65 348.6
------------------------	--	---	-------------------------------	---------------------------------

RADAR REQUIRED



CATEGORY	A	B	C	D
RNP 0.30 DA	434/40 384 (400-¾)			

AUTHORIZATION REQUIRED

NE-1, 09 SEP 2021 to 07 OCT 2021

NE-1, 09 SEP 2021 to 07 OCT 2021