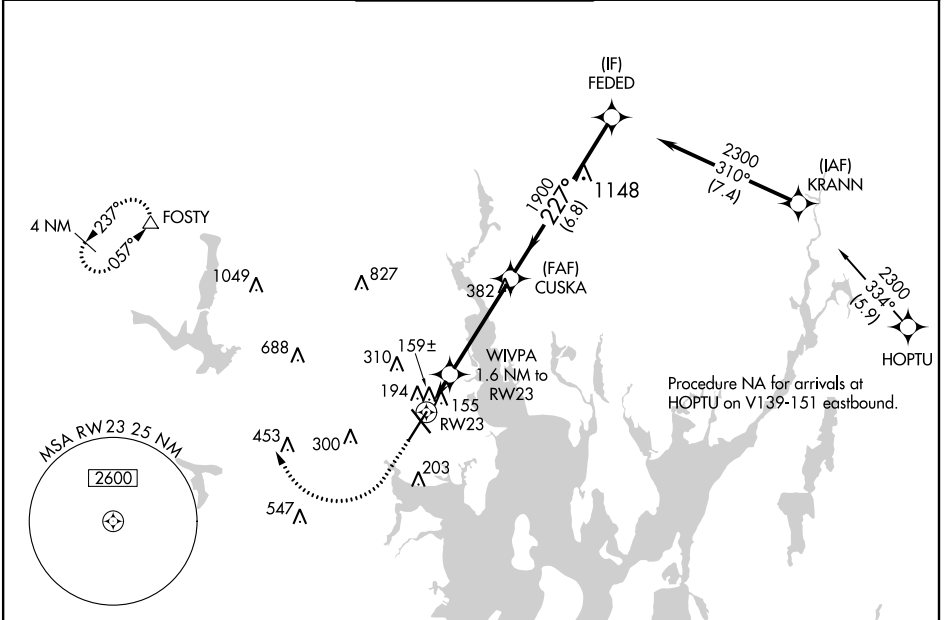


WAAS CH 93823 W23A	APP CRS 227°	Rwy Idg TDZE Apt Elev	8700 50 54
--	------------------------	-----------------------------	---------------------------------------

RNAV (GPS) Y RWY 23

THEODORE FRANCIS GREEN STATE (PVD)

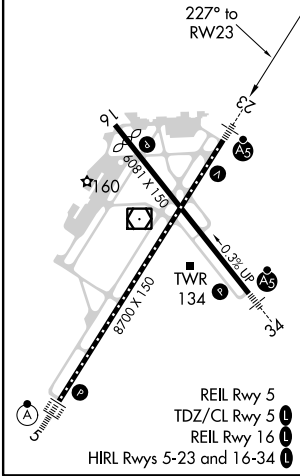
RNP APCH.		MALSR	MISSED APPROACH: Climb to 1700 then climbing right turn to 2500 direct FOSTY and hold.	
<p>▼ For uncompensated Baro-VNAV systems, procedure NA below -17°C or above 54°C. For inop ALS, increase LNAV Cats C/D visibility to RVR 6000. ** RVR 1800 authorized with use of FD or AP or HUD to DA.</p>				
D-ATIS 124.2	PROVIDENCE APP CON * 123.675 244.875	PROVIDENCE TOWER * 120.7 (CTAF) 257.8	GND CON 121.9 348.6	CLNC DEL 126.65 348.6



NE-1, 09 SEP 2021 to 07 OCT 2021

NE-1, 09 SEP 2021 to 07 OCT 2021

ELEV 54	D	TDZE 50
---------	----------	---------



1700	2500	FOSTY	VGSi and RNAV glidepath not coincident (VGSi Angle 3.00/TCH 41).	
*LNAV only		WIVPA 1.6 NM to RW23	CUSKA 1900	FEDED 2300
RW23		*1 NM to RW23	*600	1900
GP 3.00° TCH 51				
-1 NM		0.6 NM	4.1 NM	6.8 NM
CATEGORY	A	B	C	D
LPV DA **	250/24		200 (200-½)	
LNAV/VNAV DA	346/24		296 (300-½)	
LNAV MDA	460/24	410 (500-½)	460/40	410 (500-¾)
C CIRCLING	560-1 506 (600-1)	640-1 586 (600-1)	640-1½ 586 (600-1½)	860-2½ 806 (900-2½)