

VOR/DME PVD	APP CRS	Rwy Idg	8700
115.6	041°	TDZE	53
Chan 103		Apt Elev	54

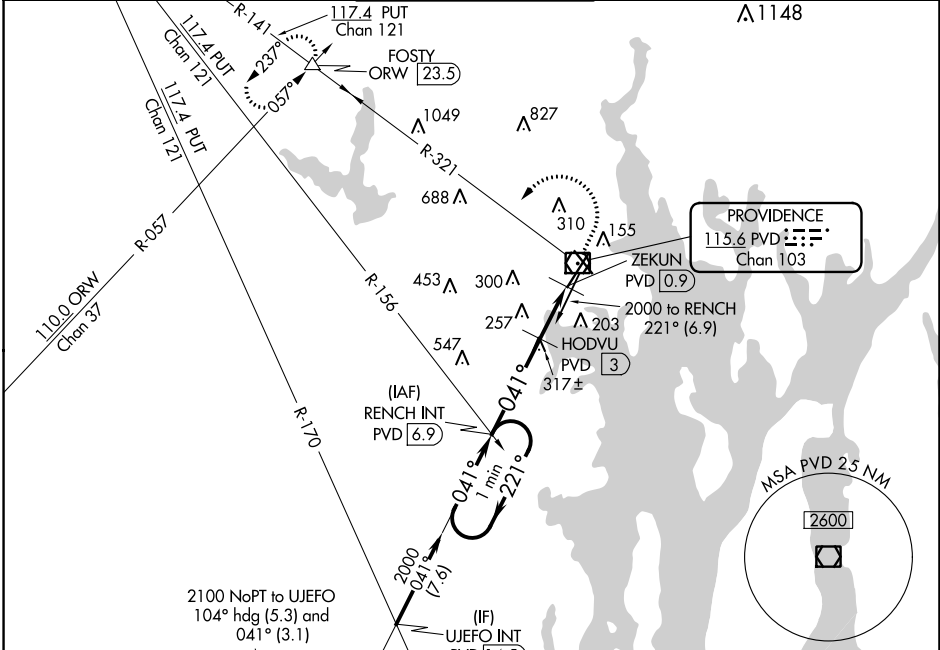
VOR RWY 5

THEODORE FRANCIS GREEN STATE (PVD)

⚠ For inop ALS, increase S-5 Cat C/D visibility to 2 SM. When control tower closed: increase S-5 Cats A and B visibility to 3/4 SM, and S-5 Cats C and D visibility to 1 3/4 SM. When control tower closed: HODVU fix minimums: increase S-5 Cats A and B visibility to 3/4 SM, and S-5 Cats C and D visibility to 1 3/4 SM.

ALSF-2
 MISSED APPROACH: Climb to 800 then climbing left turn to 2500 on PVD VOR/DME R-321 to FOSTY INT/ORW 23.5 DME and hold.

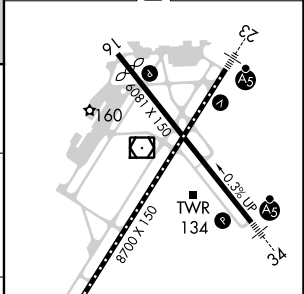
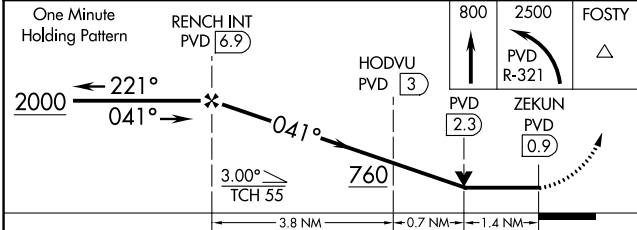
D-ATIS	PROVIDENCE APP CON *	PROVIDENCE TOWER *	GND CON	CLNC DEL
124.2	123.675 244.875	120.7 (CTAF) 257.8	121.9 348.6	126.65 348.6



NE-1, 09 SEP 2021 to 07 OCT 2021

NE-1, 09 SEP 2021 to 07 OCT 2021

ELEV	54	D	TDZE	53
------	----	---	------	----



CATEGORY	A	B	C	D
S-5	760/24	707 (800-1/2)	760-1 5/8	707 (800-1 5/8)
CIRCLING	760-1	706 (800-1)	760-2 706 (800-2)	860-2 1/2 806 (900-2 1/2)
HODVU FIX MINIMUMS				
S-5	560/24	507 (600-1/2)	560/55	507 (600-1)
CIRCLING	560-1 506 (600-1)	640-1 586 (600-1)	640-1 1/2 586 (600-1 1/2)	860-2 1/2 806 (900-2 1/2)

REIL Rwy 5	TDZ/CL Rwy 5	REIL Rwy 16	HIRL Rwys 5-23 and 16-34
041° 5.9 NM from FAF	FAF to MAP 5.9 NM		
Knots	60	90	120 150 180
Min:Sec	5:54	3:56	2:57 2:22 1:58