

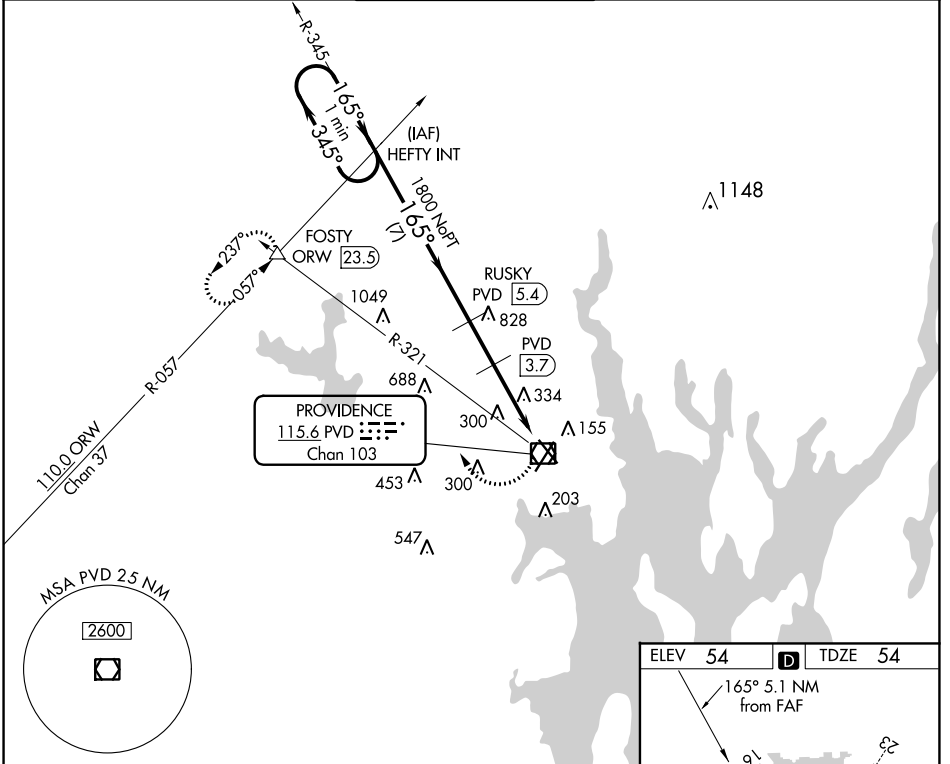
VOR/DME PVD <b>115.6</b> Chan <b>103</b>	APP CRS <b>165°</b>	Rwy Idg TDZE Apt Elev <b>5516</b> <b>54</b> <b>54</b>
--	------------------------	--

# VOR/DME RWY 16

THEODORE FRANCIS GREEN STATE (PVD)

**▼** Rwy 16 helicopter visibility reduction below 3/4 SM NA.  
**▲** MISSED APPROACH: Climbing right turn to 2500 via PVD R-321 to FOSTY INT and hold.

D-ATIS <b>124.2</b>	PROVIDENCE APP CON * <b>123.675 244.875</b>	PROVIDENCE TOWER * <b>120.7</b> (CTAF) <b>257.8</b>	GND CON <b>121.9 348.6</b>	CLNC DEL <b>126.65 348.6</b>
------------------------	--	--	-------------------------------	---------------------------------



NE-1, 09 SEP 2021 to 07 OCT 2021

NE-1, 09 SEP 2021 to 07 OCT 2021

