

APP CRS	Rwy Idg	6010
238°	TDZE	1170
	Apt Elev	1175

RNAV (RNP) Z RWY 24

ROANOKE-BLACKSBURG RGNL/WOODRUM FLD (R.O.A)

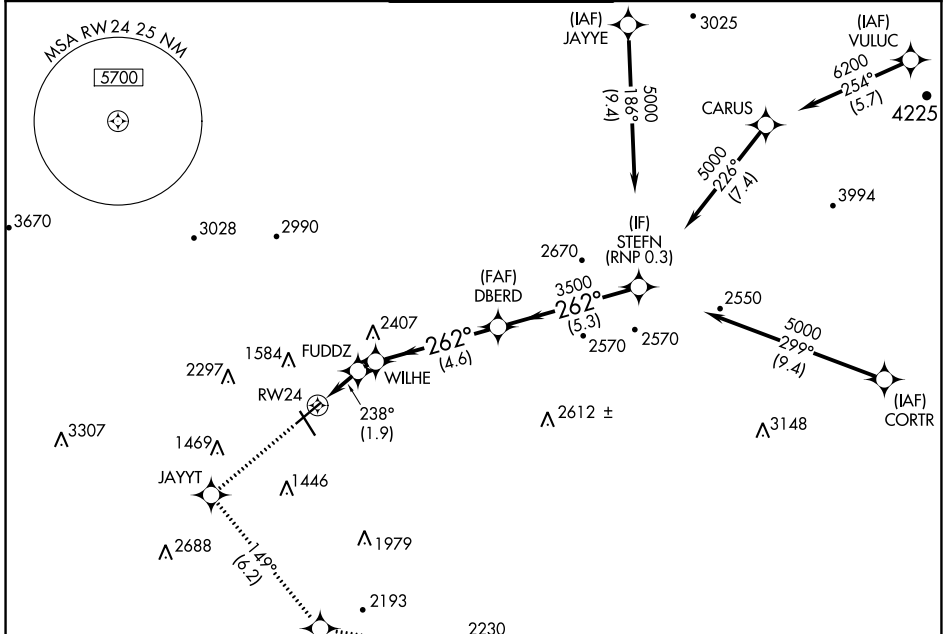
RNP AR APCH. RF required.

V For uncompensated Baro-VNAV systems, procedure NA below -14°C or above 54°C.

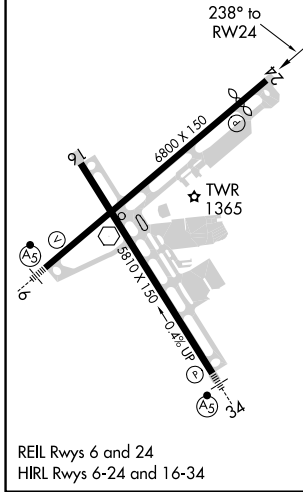
33 -13°C

MISSED APPROACH: Climb to 4000 direct JAYYT and on track 149° to TPUCK and on track 107° to MONAT and hold. # Missed approach requires minimum climb of 217 feet per NM to 3200.

ATIS	ROANOKE APP CON	ROANOKE TOWER	GND CON	CLNC DEL
132.375	126.9 339.8	118.3 257.8	121.9 257.8	119.7



ELEV 1175	D	TDZE 1170
-----------	----------	-----------



4000	JAYYT	tr 149°	TPUCK	tr 107°	MONAT	VGSI and RNAV glidepath not coincident (VGSI Angle 3.00/TCH 58).
			DBERD	STEFN		
			3500	5000		
			262°			
			3500			
			238°			
			1.9 NM	0.7 NM	4.6 NM	5.3 NM
CATEGORY	A	B	C	D		
# RNP 0.15 DA		1491-1	321 (400-1)			
RNP 0.30 DA		1579-1 1/8	409 (500-1 1/8)			
						GP 3.00 TCH 55

REIL Rws 6 and 24
HIRL Rws 6-24 and 16-34

ROANOKE-BLACKSBURG RGNL/WOODRUM FLD (R.O.A)

37°20'N-79°59'W

RNAV (RNP) Z RWY 24

AUTHORIZATION REQUIRED

NE-3, 09 SEP 2021 to 07 OCT 2021

NE-3, 09 SEP 2021 to 07 OCT 2021