


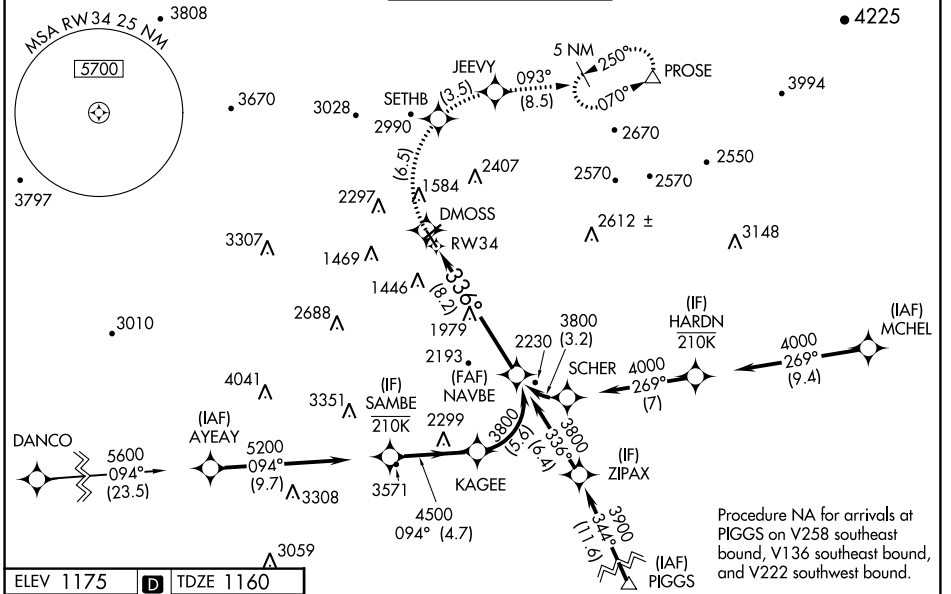
APP CRS	Rwy Idg	<b>5810</b>
<b>336°</b>	TDZE	<b>1160</b>
	Apt Elev	<b>1175</b>

# RNAV (RNP) Z RWY 34

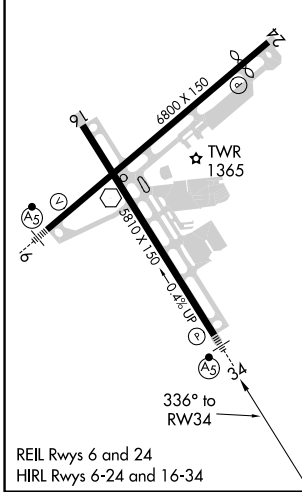
ROANOKE-BLACKSBURG RGNL/WOODRUM FLD (R.O.A)

<p>RNP AR APCH. RF required.</p> <p><b>⚠</b> Missed approach requires RNP less than 1.0. For inop ALS, increase RNP 0.30* all Cats visibility to 1<math>\frac{1}{2}</math> SM. Inop table does not apply to RNP 0.30.</p> <p><b>❄</b> -13°C For uncomparted Baro-VNAV systems, procedure NA below -14°C or above 54°C.</p>	<p><b>MALSR</b></p>  <p>MISSED APPROACH: Climb to 6000 on track 336° to DMOSS, right turn to SETHB, right turn to JEEVY and on track 093° to PROSE and hold. * Missed approach requires minimum climb of 350 feet per NM to 4100. # Missed approach requires minimum climb of 415 feet per NM to 4100.</p>
--	---

ATIS <b>132.375</b>	ROANOKE APP CON <b>126.9 339.8</b>	ROANOKE TOWER <b>118.3 257.8</b>	GND CON <b>121.9 257.8</b>	CLNC DEL <b>119.7</b>
------------------------	---------------------------------------	-------------------------------------	-------------------------------	--------------------------



ELEV 1175	<b>D</b>	TDZE 1160
-----------	----------	-----------



6000	DMOSS	SETHB	JEEVY	PROSE	
↑				tr 093°	△
See planview for multiple IF locations.					
CATEGORY	A	B	C	D	
RNP 0.15 DA #	1495-1/2		335 (400-1/2)		
RNP 0.30 DA*	1646-1		486 (500-1)		
RNP 0.30 DA	2115-4		955 (1000-4)		

## AUTHORIZATION REQUIRED

NE-3, 09 SEP 2021 to 07 OCT 2021

NE-3, 09 SEP 2021 to 07 OCT 2021