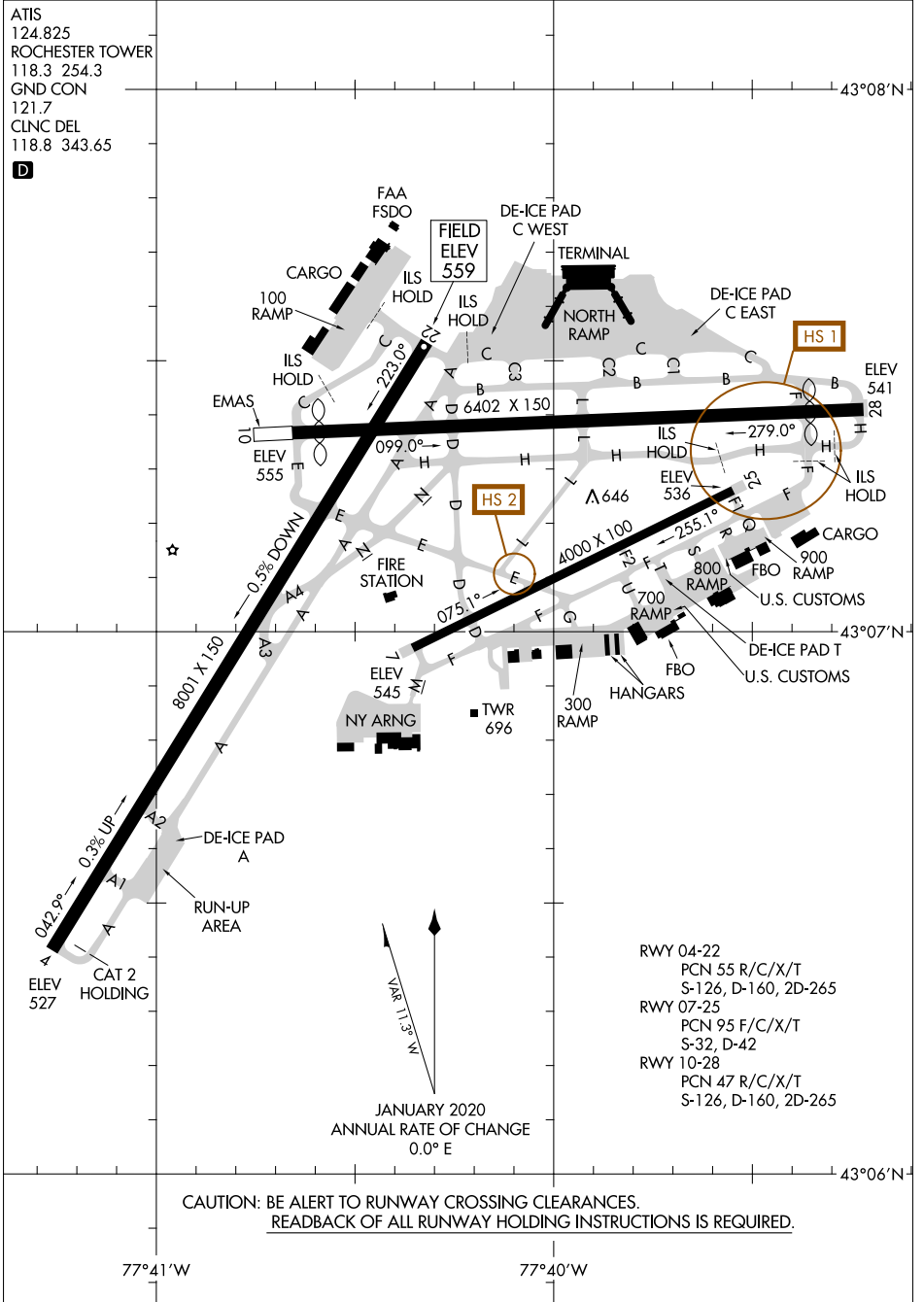


ATIS
124.825
ROCHESTER TOWER
118.3 254.3
GND CON
121.7
CLNC DEL
118.8 343.65



NE-2, 09 SEP 2021 to 07 OCT 2021

NE-2, 09 SEP 2021 to 07 OCT 2021



RWY 04-22
PCN 55 R/C/X/T
S-126, D-160, 2D-265
RWY 07-25
PCN 95 F/C/X/T
S-32, D-42
RWY 10-28
PCN 47 R/C/X/T
S-126, D-160, 2D-265

JANUARY 2020
ANNUAL RATE OF CHANGE
0.0° E

CAUTION: BE ALERT TO RUNWAY CROSSING CLEARANCES.
READBACK OF ALL RUNWAY HOLDING INSTRUCTIONS IS REQUIRED.

77°41'W

77°40'W