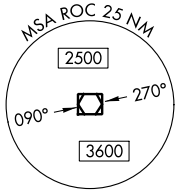
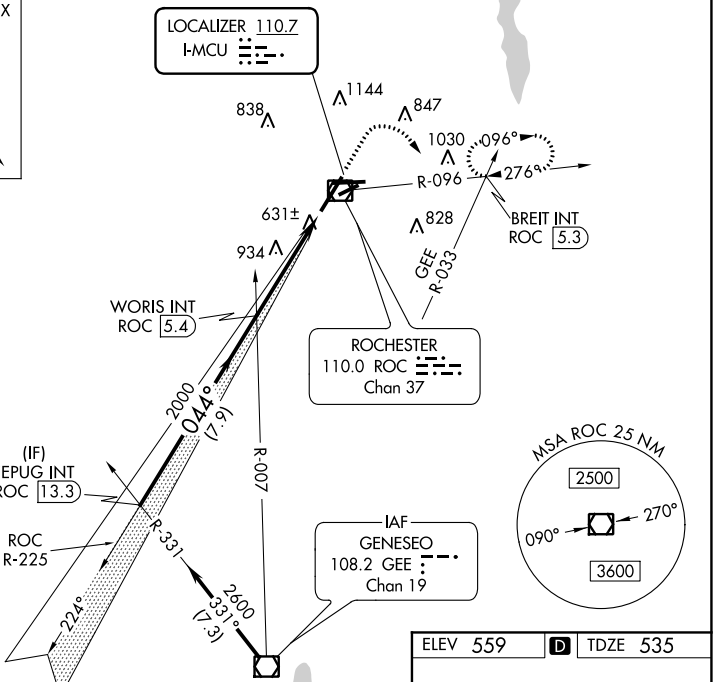
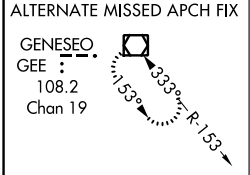


LOC I-MCU <b>110.7</b>	APP CRS <b>044°</b>	Rwy Idg TDZE Apt Elev	<b>8001</b> <b>535</b> <b>559</b>
---------------------------	------------------------	-----------------------------	---

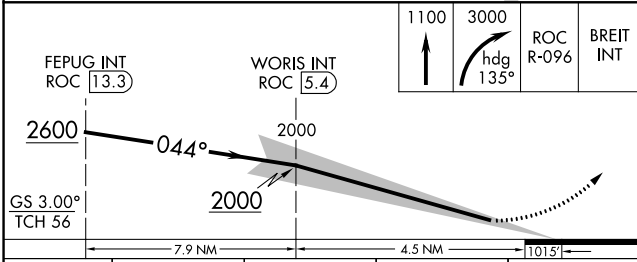
# ILS RWY 4 (CAT II)

FREDERICK DOUGLASS - GREATER ROCHESTER INTL (ROC)

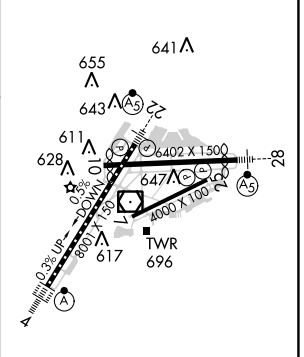
	MISSED APPROACH: Climb to 1100 then climbing right turn to 3000 on heading 135° and ROC VOR/DME R-096 to BREIT INT/ROC 5.3 DME and hold, continue climb-in-hold to 3000.			
	ATIS <b>124.825</b>	ROCHESTER APP CON <b>119.55 269.6</b>	ROCHESTER TOWER <b>118.3 254.3</b>	GND CON <b>121.7</b>



Procedure NA for arrivals at GEE VOR/DME on airway radials 287 CW 018.



ELEV 559	<b>D</b> TDZE 535
----------	-------------------



CATEGORY	A	B	C	D
S-ILS 4	RA 107/12 100 DA 635			

**CATEGORY II ILS - SPECIAL AIRCREW & AIRCRAFT CERTIFICATION REQUIRED**

TDZ/CL Rwy 4  
REIL Rwy 7, 10 and 25  
MIRL Rwy 7-25  
HIRL Rwy 10-28 and 4-22

# ILS RWY 4 (CAT II)

NE-2, 09 SEP 2021 to 07 OCT 2021

NE-2, 09 SEP 2021 to 07 OCT 2021