

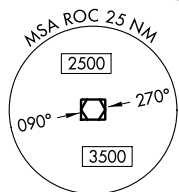
LOC I-MWD 110.7	APP CRS 224°	Rwy Idg TDZE Apt Elev	8001 559 559
---------------------------	------------------------	-----------------------------	---

ILS or LOC RWY 22

FREDERICK DOUGLASS - GREATER ROCHESTER INTL (ROC)

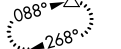
<p>When R-5203 active hold in lieu not authorized. * RVR 1800 authorized with the use of FD or AP or HUD to DA.</p>	<p>MALS R</p>	<p>MISSED APPROACH: Climb to 1000 then climbing left turn to 4000 direct GEE VOR/DME and hold.</p>		
		<p>ATIS 124.825</p>	<p>ROCHESTER APP CON 119.55 269.6</p>	<p>ROCHESTER TOWER 118.3 254.3</p>

DME OR RADAR REQUIRED



ALTERNATE MISSED APCH FIX

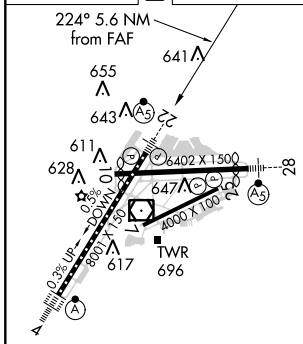
MONCK ROC 10



LOCALIZER 110.7
I-MWD

MONCK ROC 10

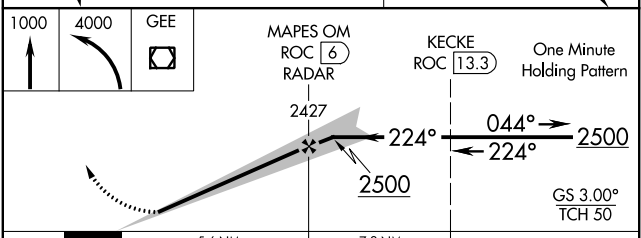
ELEV 559 TDZE 559



TDZ/CL Rwy 4
REIL Rws 7, 10 and 25
MIRL Rwy 7-25
HIRL Rws 10-28 and 4-22

FAF to MAP 5.6 NM

Knots	60	90	120	150	180
Min:Sec	5:36	3:44	2:48	2:14	1:52



CATEGORY	A	B	C	D
S-ILS 22	* 759/24 200 (200-½)			
S-LOC 22	1000/24	441 (500-½)	1000/45	441 (500-¾)
CIRCLING	1060-1 501 (600-1)		1500-2¾ 941 (1000-2¾)	1500-3 941 (1000-3)

NE-2, 09 SEP 2021 to 07 OCT 2021

NE-2, 09 SEP 2021 to 07 OCT 2021