

LOC/DME I-ROC 109.5 Chan 32	APP CRS 280°	Rwy Idg 5802 TDZE 550 Apt Elev 559
---	------------------------	---

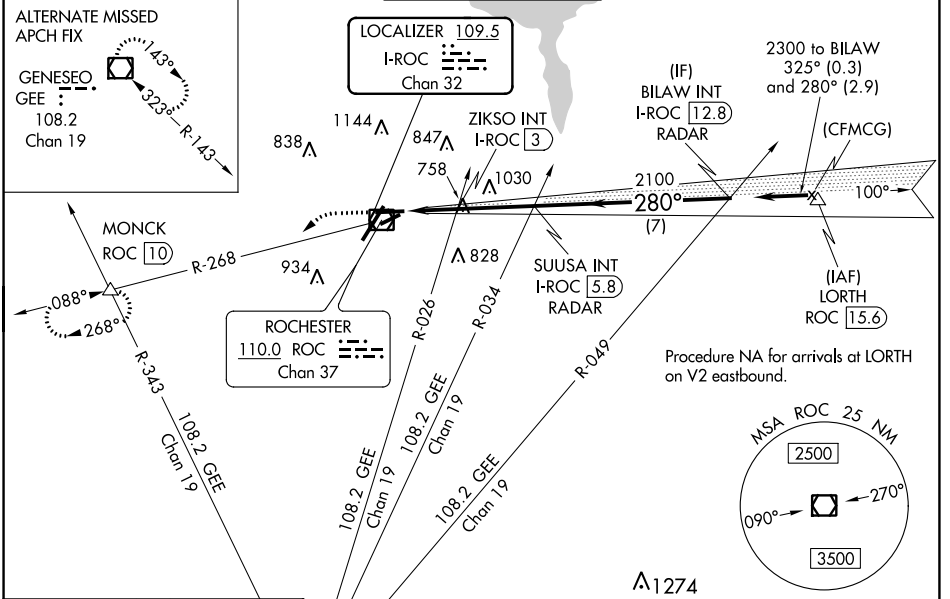
ILS or LOC RWY 28

FREDERICK DOUGLASS - GREATER ROCHESTER INTL (ROC)

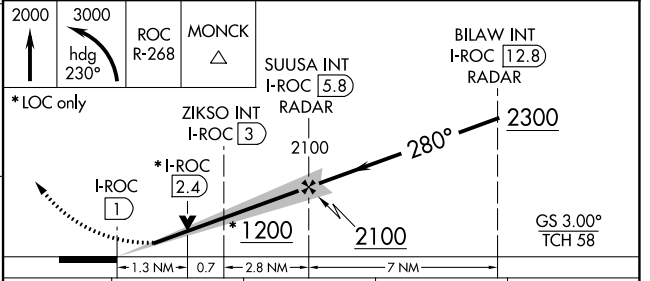
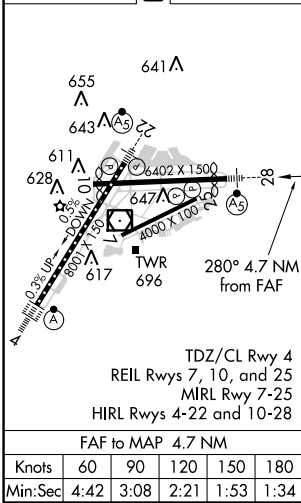
⚠ Helicopter visibility reduction below RVR 4000 NA.
⚠ Multiple unshielded lights in final approach area.
 For inop MALSR, increase S-ILS 28 all Cats visibility to RVR 4500 and S-LOC 28 Cat A/B visibility to RVR 5500. For inop MALSR with ZIKSO fix minimums, increase S-LOC 28 Cat A/B visibility to RVR 5500 and Cat C/D visibility to 1½.

MALSR
 MISSED APPROACH: Climb to 2000 then climbing left turn to 3000 on heading 230° and ROC VOR/DME R-268 to MONCK INT/ROC 10 DME and hold.

ATIS 124.825	ROCHESTER APP CON 119.55 269.6	ROCHESTER TOWER 118.3 254.3	GND CON 121.7	CLNC DEL 118.8 343.65
------------------------	--	--	-------------------------	---------------------------------



ELEV 559	D	TDZE 550
----------	----------	----------



CATEGORY	A	B	C	D
S-ILS 28	821/40 271 (300-¾)			
S-LOC 28	1200/40	650 (700-¾)	1200-1½	650 (700-1½)
C CIRCLING	1200-1	641 (700-1)	1500-2¾ 941 (1000-2¾)	1500-3 941 (1000-3)
ZIKSO FIX MINIMUMS (DUAL VOR RECEIVERS OR DME REQUIRED)				
S-LOC 28	1020/40	470 (500-¾)	1020/50	470 (500-1)
C CIRCLING	1060-1	501 (600-1)	1500-2¾ 941 (1000-2¾)	1500-3 941 (1000-3)

NE-2, 09 SEP 2021 to 07 OCT 2021

NE-2, 09 SEP 2021 to 07 OCT 2021