

LOC I-MCC 109.7	APP CRS 163°	Rwy Idg 10599 TDZE 77 Apt Elev 77
---------------------------	------------------------	--

ILS or LOC RWY 16

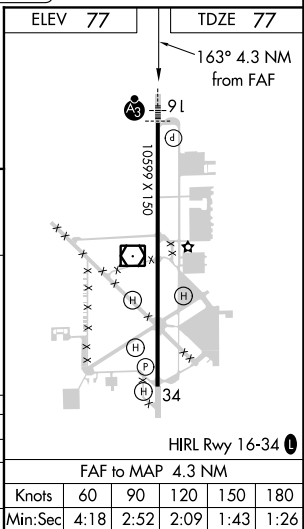
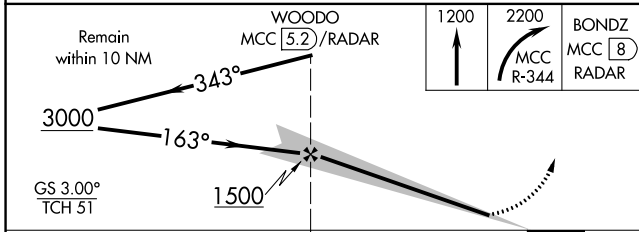
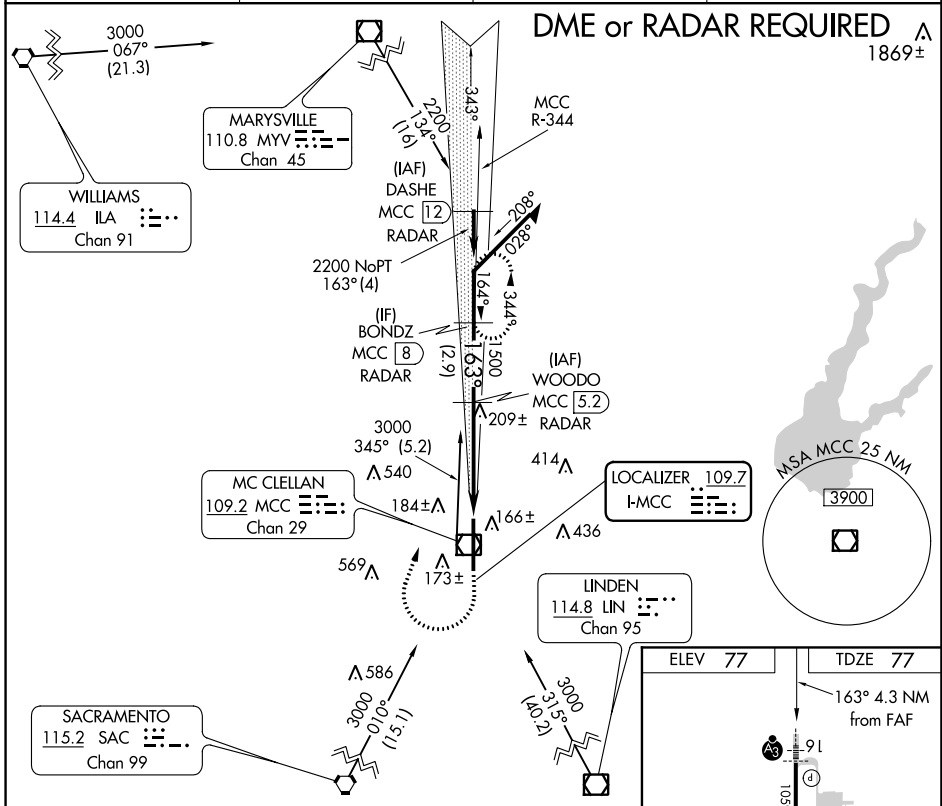
MC CLELLAN AIRFIELD (MCC)

NA DME from MCC VOR/DME. If local altimeter setting is not received, use Sacramento Intl altimeter setting and increase all DH/MDAs 40 feet.

SSALR

MISSED APPROACH: Climb to 1200 then climbing right turn to 2200 via MCC VOR/DME R-344 to BONDZ/MCC 8 DME/RADAR and hold.

AWOS-3 125.975	NORCAL APP CON 127.4 317.5	CINC DEL 119.825	UNICOM 122.975 (CTAF)
--------------------------	--------------------------------------	----------------------------	---------------------------------



CATEGORY	A	B	C	D
S-ILS 16		277-½	200 (200-½)	
S-LOC 16		460-½	383 (400-½)	460-¾ 383 (400-¾)
CIRCLING		NA		

SW-2, 09 SEP 2021 to 07 OCT 2021

SW-2, 09 SEP 2021 to 07 OCT 2021